

WARRANTY

EGO SYStems Inc. warrants the return policy to its original purchaser as follows; All EGO SYS products, under normal use, will be free from faulty as long as the purchaser owns this product.

The terms of warranty is 15 months to EGO SYS distributors considering a 3-month temporary stock period ahead of being sold to the end user. Therefore, the actual terms of warranty is 12 months to the end user.

EGO SYS will, at its sole option, repair or replace a product, which is found to be defective. This warranty shall be null and void if, in the sole opinion of EGO SYS, a product failure is the result of misuse, abuse, modification, or misapplication. Except as expressly provided above, EGO SYS products are provided 'as is' without any kind of warranty. No claim is made for merchantability or fitness for any purpose. In no event will EGO SYS be liable for any direct, indirect, consequential, or incidental damages arising out of use of the product. The purchaser must contact EGO SYS or its regional representative to receive prior approval before returning a faulty unit. All such returns must be shipped to EGO SYS' headquarters in Seoul, Korea as being packaged in the original or equivalent protective packaging material (Rack, PCI card, Power Cables, connection cables), with freight prepaid and adequate insurance.

If the returned product is deemed to be defective, the repaired or replacement product will be back to you at no extra charge via the carrier chosen by EGO SYS.

TRADE MARKS

ESI, GIGAPort DG are trademarks of EGO SYStems Inc. IBM is a registered trademark of International Business Machines Corporation. Windows is a trademark of Microsoft Corporation. Other product and brand names are trademarks or registered trademarks of their respective companies.

RADIO FREQUENCY INTERFERENCE

NOTE: This equipment has been tested and found to comply with the limits for a Class A device, pursuant to Part 15 of the FCC Rules, and EN50 081-1/2:1992 of CE Test Specifications. This equipment generates, uses, and can radiate radio frequency energy. If not installed and used in accordance with the instruction, it may cause interference to radio communications.

CORRESPONDENCE

For technical support inquiries, contact your nearest GIGAPort DG dealer or contact us directly. Direct all other correspondence to:

EGO SYStems Inc.

Suite 1003, Shinhan Bldg. 45-11 Yoido-dong

Youngdungpo-gu, Seoul, Korea

Tel: +82 2 780-4451~3 Fax: +82 2 780-4454

Web Site: www.egosys.net E-mail: webmaster@egosys.net

First Edition Jan. 2002

CONTENTS

1.OVERVIEW.....	3
2. FEATURES.....	4
3. SYSTEM REQUIREMENT.....	5
4. HARDWARE INSTALLATION	6
5. DRIVER INSTALLATION	7
1) PC	7
2) MAC.....	13
6. WORKING WITH APPLICATIONS.....	14
1) PC	14
<i>Cubase VST.....</i>	<i>14</i>
<i>Logic</i>	<i>15</i>
<i>Nuendo</i>	<i>16</i>
<i>Reason.....</i>	<i>17</i>
<i>Reactor.....</i>	<i>17</i>
2) MAC.....	18
<i>Cubase VST.....</i>	<i>18</i>
<i>Logic</i>	<i>19</i>
<i>Nuendo</i>	<i>19</i>
<i>Reason.....</i>	<i>20</i>
<i>Reactor.....</i>	<i>20</i>
<i>SPARK.....</i>	<i>21</i>
7. GIGAPORT DG CONTROL PANEL	22
1) PC	22
2) MAC.....	25
SPECIFICATION.....	28

* All features and specifications subject to change without notice.

1.Overview

Thank you for choosing ESI GIGAPort DG, the world's first USB to ADAT Interface.

GIGAPort DG is an USB to ADAT Interface with one ADAT digital output.

It is simple (to use), tiny(body), and fast(processing).

GIGAPort DG can be used with your digital audio recording software to playback stereo digital audio source with exceptional audio quality.

USB stands for Universal Serial Bus, which means it connects peripherals to a computer. It is an evolved form of old serial or parallel bus.

USB makes installation of new peripherals much simpler, just plug and play. You don't have to open the PC to add a peripheral any more, just plug and turn it on. With USB-compliant computers and peripherals, there are no more worries about IRQ setting, DIP switch setting, or card installation. Even the computer turned on, it is no problem with attaching and removing devices. Just plug and play!

Practically, there is no limit on number of devices that can be linked to the computer using USB hubs.

USB even provide electrical power and supplies it, which eliminates messy power cables from working space.

If you are a professional or in need of a professional quality USB audio interface, you have made a sound investment in GIGAPort DG.

2. Features

8 Channels of digital output

GIGAPort DG provides 8 channels of digital output via USB for playing back multi tracks of popular Software Synths and Sampler. GIGAPort DG is the world's first USB to ADAT interface.

Portable Design

Small enough to fit in your pocket, GIGAPort DG's compact design allows you to take your project on the road anywhere and everywhere you want to go.

Easy to install, simple to operate

Just plug GIGAPort DG's USB connector into your computer and the other end into an ADAT digital enabled device such as a recorder or mixer and you're set to go.

Virtual Instruments ready

GIGAPort DG is custom made for you to get the most out of your software synths and samplers.

ASIO Empowered

GIGAPort DG is the perfect match for ASIO driven software like CUBASE, NUENDO, REACTOR, REASON and LOGIC.

GSIF support for TASCAM GigaStudio is in development.

3. System Requirement

Most of all, your system has to have at least one available USB port to use GIGAPort DG.

Minimum system requirement for PC

- Intel Pentium II 300 MHz CPU or equivalent AMD CPU
- Windows 98SE, ME, 2000 operating system
- 1 open USB port
- 64MB of Ram
- Digital audio software (must be supporting ASIO driver)

Recommended system requirement for PC

- Intel Pentium III 600MHz CPU or higher
- Windows 98SE, ME, 2000 operating system
- 1 open USB port
- 128MB of Ram
- Digital audio software (must be supporting ASIO driver)

System requirement for MAC

- Power Macintosh G3 or higher
- One available USB port
- 64MB of RAM
- (Highly depends on the system requirements of your audio software)
- Mac OS9.0 or later
- Digital audio software (must be supporting ASIO driver)

4. Hardware Installation

Before you begin, make sure you have to read your computer's manual on installing USB devices. Your computer's manual should describe the precautions you should take.

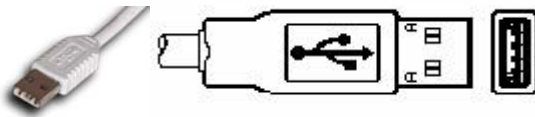
Shutting down computer wouldn't need for installing an USB device to the computer. However, we will take it from the start to make sure you can follow every detail installation.

1. Turn off the computer.
2. Find USB port on your computer. USB port is looked like below. You can find it by the PS/2 or serial ports on the back of desktop computer system.



USB port on computer

3. Plug in GIGAPort DG's USB cable (Series A plug type) to the USB port of your computer.



USB series A plug

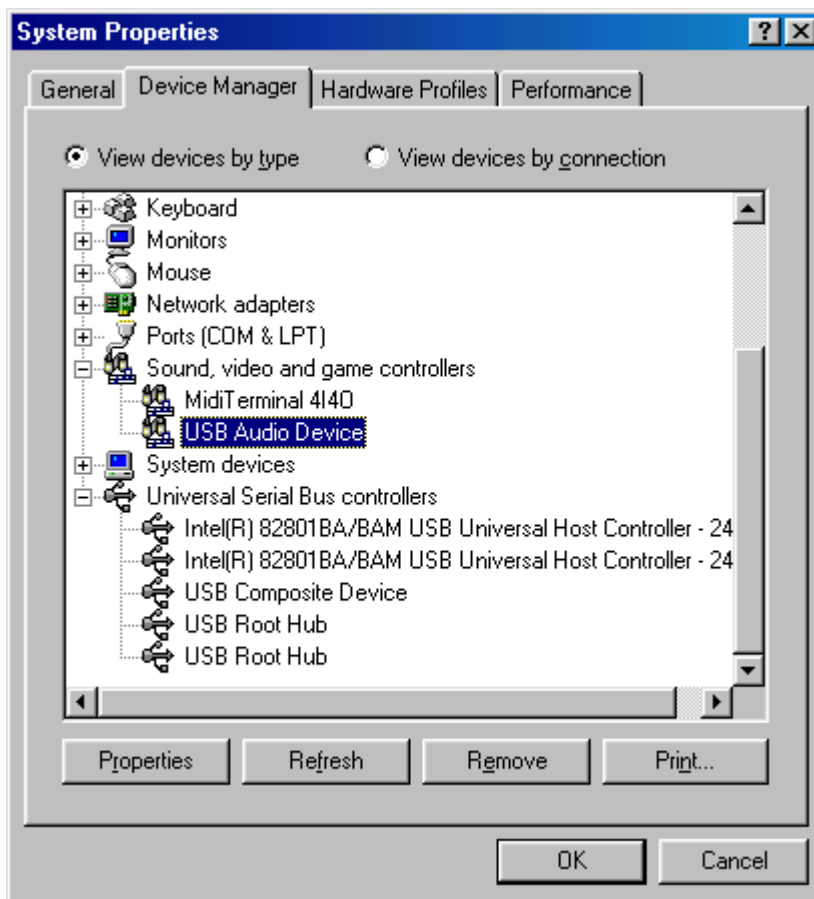
4. Turn on the computer. You can see on red light on GIGAPort DGs' ADAT digital output. GIGAPort DG gets the power from the computer via USB cable so you don't need to attach any external power supplier.
5. After finishing connection between GIGAPort DG and your computer, you need to connect from GIGAPort DG's ADAT digital output to your external devices such as ADAT machine through Optical mini cable.

5. Driver Installation

1) PC

- WDM Installation

1. After hardware installation was done properly, your computer will automatically detect GIGAPort DG as USB composite device will be installed.
2. After rebooting computer, you can find “USB Audio Device” under the “Sound, Video and game controller” section.



As above picture, GIGAPort DG is set as a “USB AUDIO Device”.
Now you can use Windows Direct sound, MME and 5.1 surround system.

Output channel	5.1 surround sound route	Stereo Sound route
1	X	Left
2	Surround Left	X
3	X	Right
4	Surround Right	X
5	Center	X
6	Left	X
7	Woofer	X
8	Right	X

* This order will be varied by your operating systems.

However, GIGAPort DG's main function is using 8 channel output with External devices. Therefore, you need to keep going to install next ASIO 2.0 driver setting for using main function.

When you install ASIO 2.0 driver in next step, 'USB device' will be disappeared.

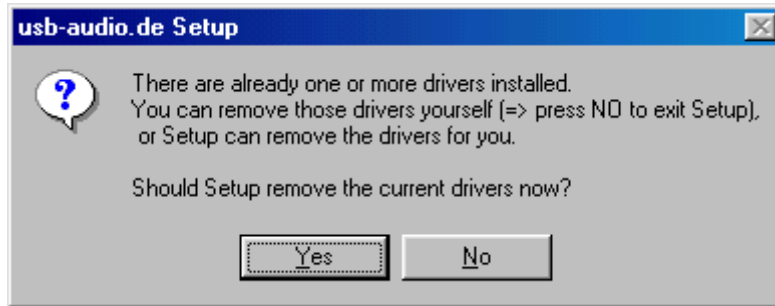
And also you cannot use MME, Direct sound, 5.1 surround function.

- ASIO2.0 Installation

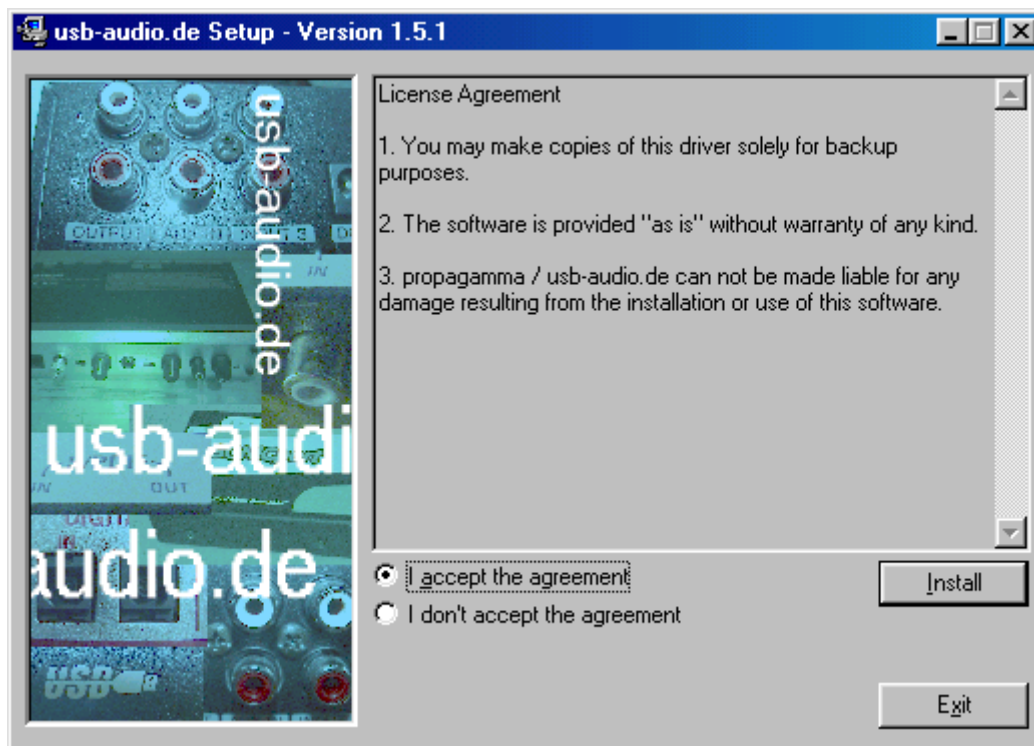
3. Insert GIGAPort DG software CD in your CD Rom drive.

Just click “setup” icon.

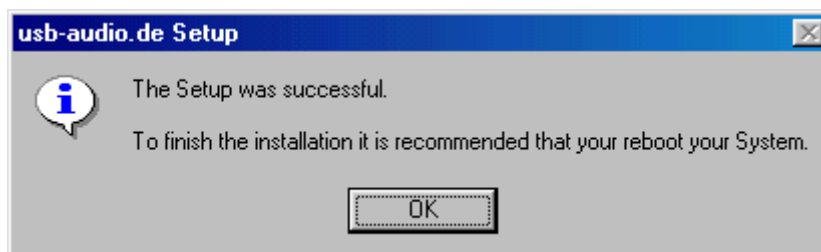
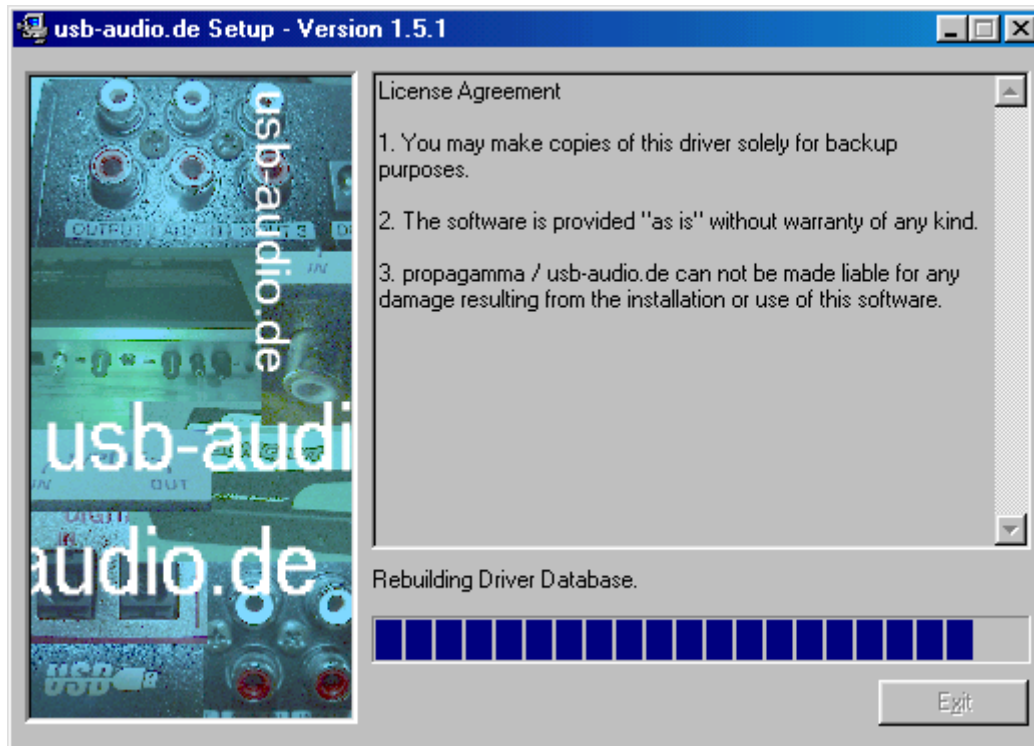
After that, if you see below message, simply click “Yes”



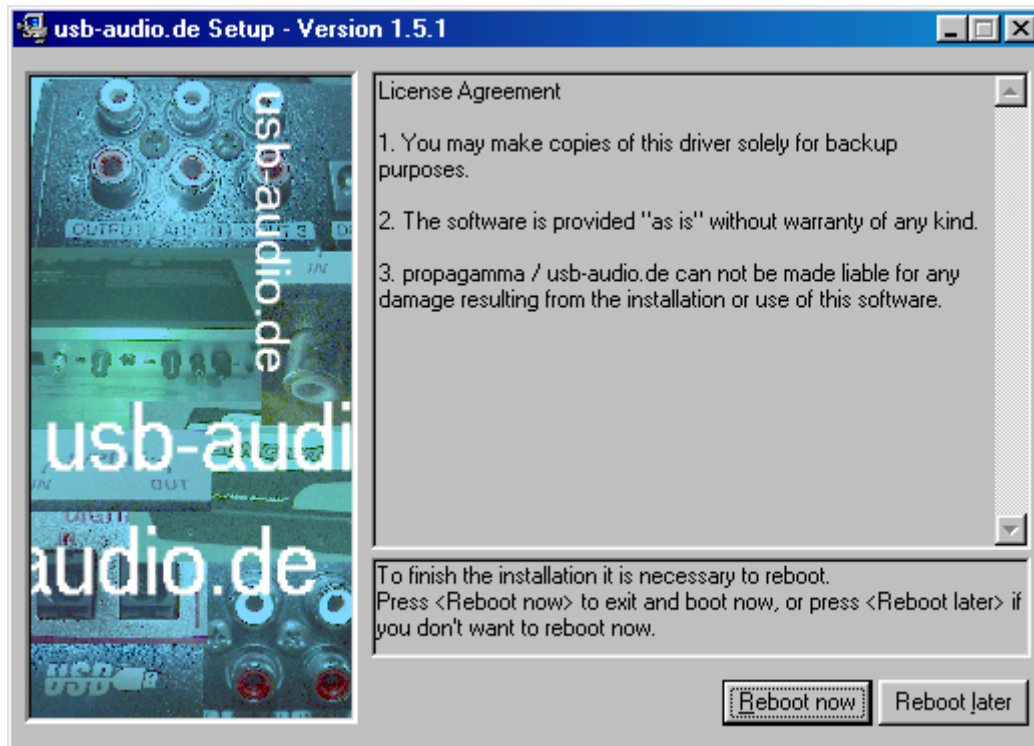
4. Check ‘I accept the agreement’ and click “Install”.



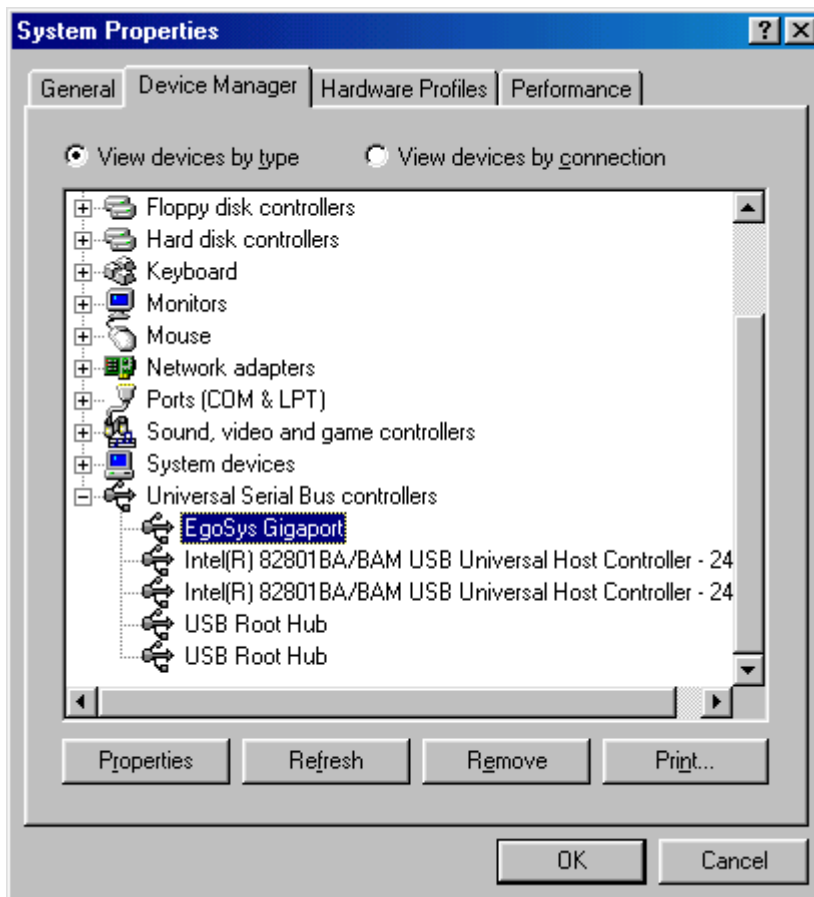
5. Now, GIGAPort DG control panel software and driver will be installed.



6. Click “Reboot now”

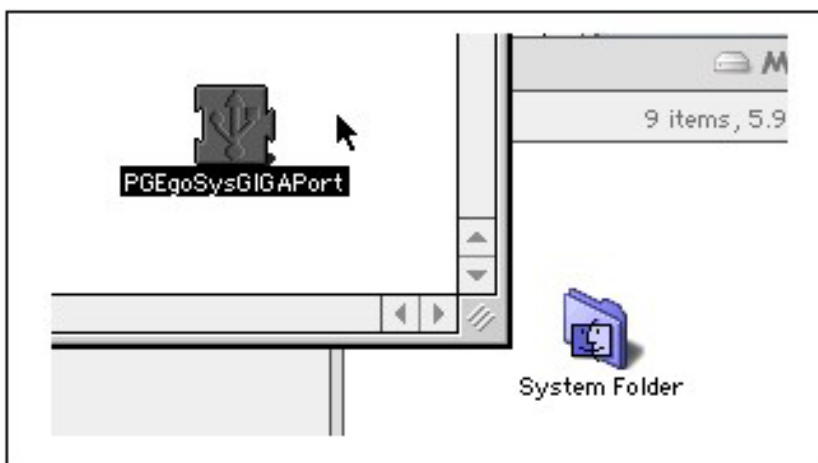


7. After rebooting your computer, open your system's Device Manager and confirm that "EgoSys Gigaport" is shown under "Universal Serial Bus Controllers".



2) MAC

1. To install the GIGAPort DG driver on your Macintosh, locate the file "PGEgoSysGIGAPort" (note not to be confused with the file "EgoSys GIGAPort" in the same folder) on the installation CD-ROM, drag the file and drop it onto the System Folder of your hard disk.
2. When a dialog box appears asking "Put "PGEgoSysGIGAPort" into the Extensions folder?" click the OK button.
3. Restart your Macintosh.
4. To use audio software with GIGAPort DG, you have to make a copy of the file "EgoSys GIGAPort" in ASIO Drivers folder of each software.



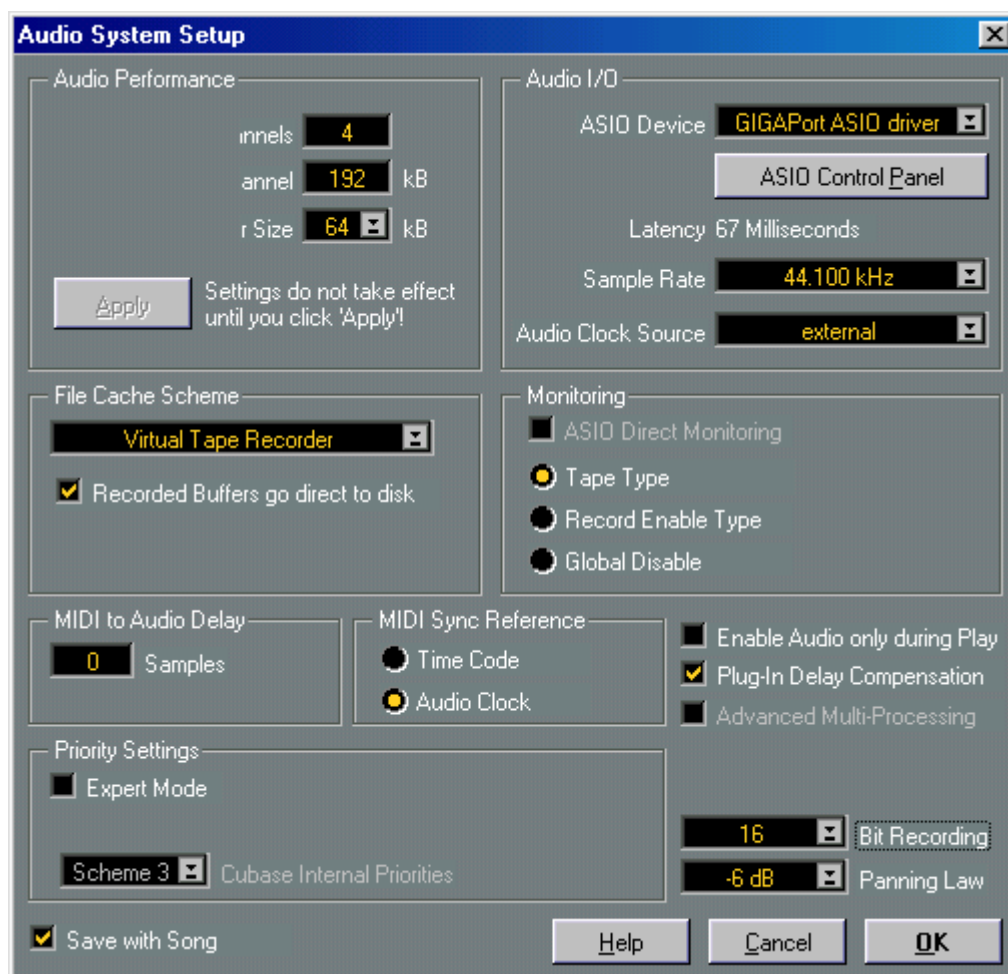
6. Working with Applications

With most ASIO digital applications, you will find ASIO once it has been installed properly. It's just a matter of selecting the sample rate and the bit depth of your preference from thereon. We have included a few examples below just as a quick setup guide. You should refer to the manuals of each application on how to optimize the audio recording and playback capabilities. If you have problems or questions with setting up GIGAPort DG on applications, please contact our technical support.

1) PC

Cubase VST

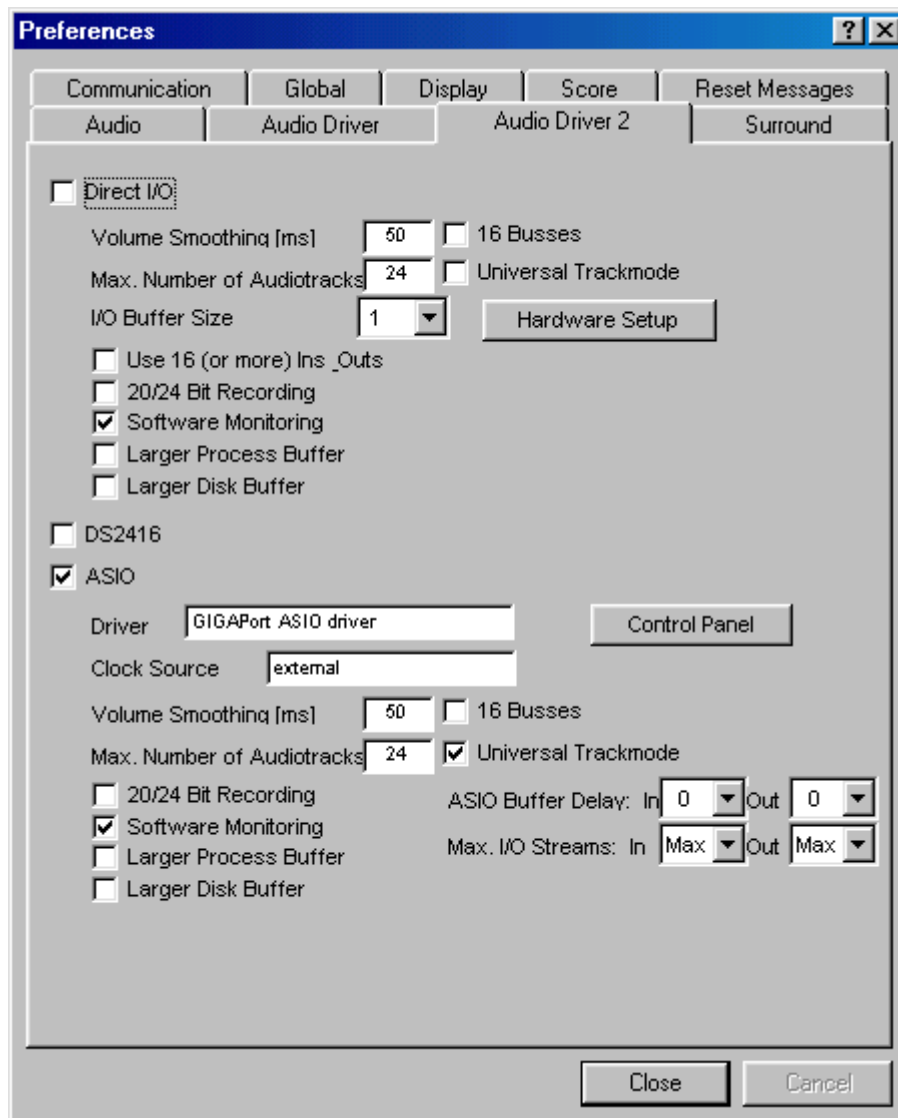
After launching Cubase, go to 'Option' -> 'Audio setup' -> System.
Select 'GIGAPort ASIO driver' for the ASIO device.



Logic

Go to Audio menu -> Audio Preference -> Audio Driver 2

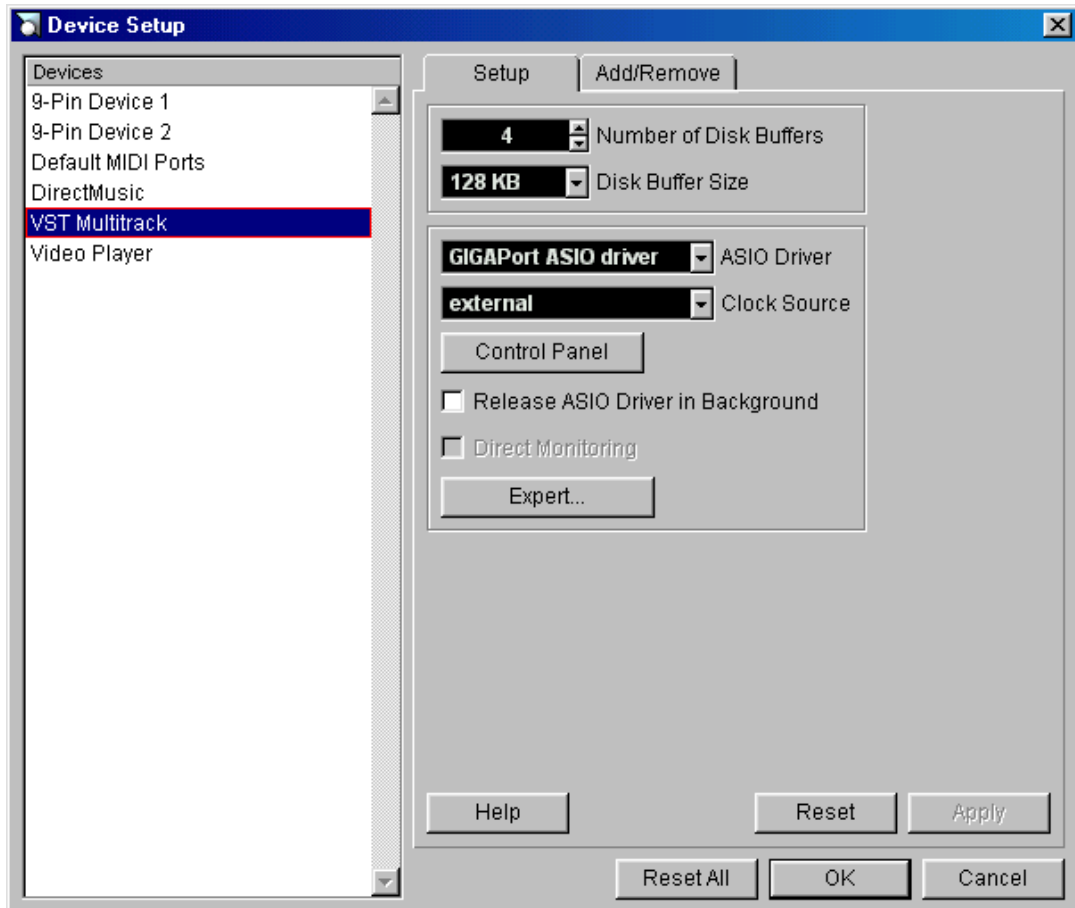
Select 'GIGAPort ASIO driver' for the ASIO driver.



Nuendo

Go to “Device” -> Device Setup” -> VST Multitrack

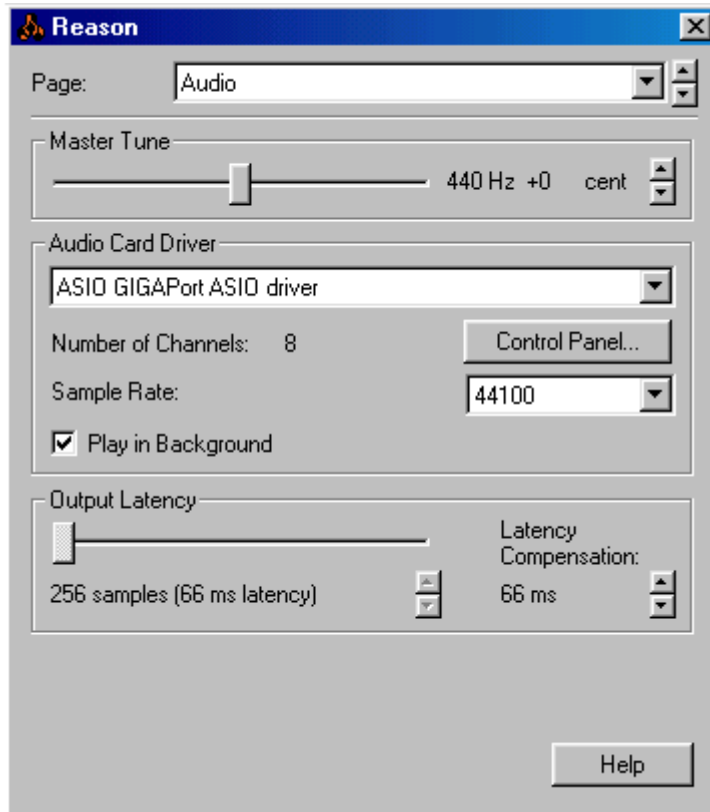
Select GIGAPort ASIO driver for the ASIO Driver.



Reason

Go to “Edit” -> Preferences -> Page -> Audio

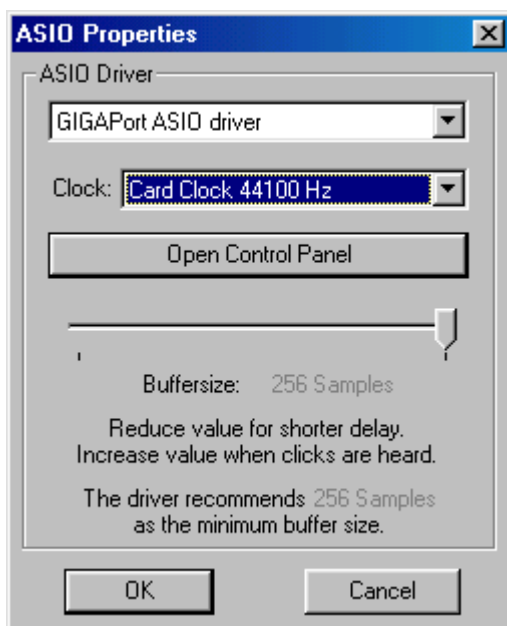
Select GIGAPort ASIO driver for the Audio card driver.



Reactor

Go to “System” menu -> Audio Setting

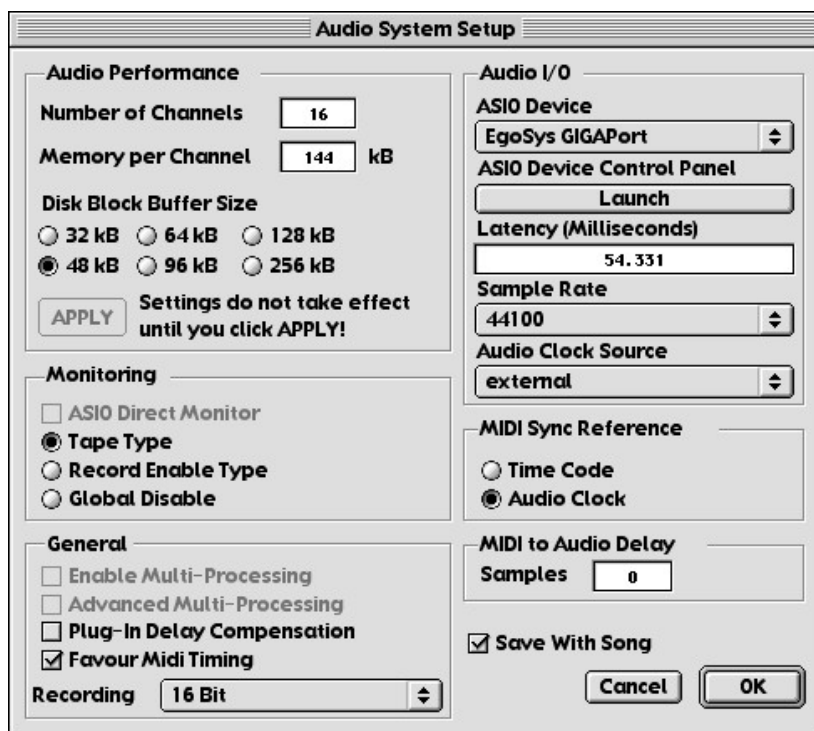
Select GIGAPort ASIO driver for the ASIO driver.



2) MAC

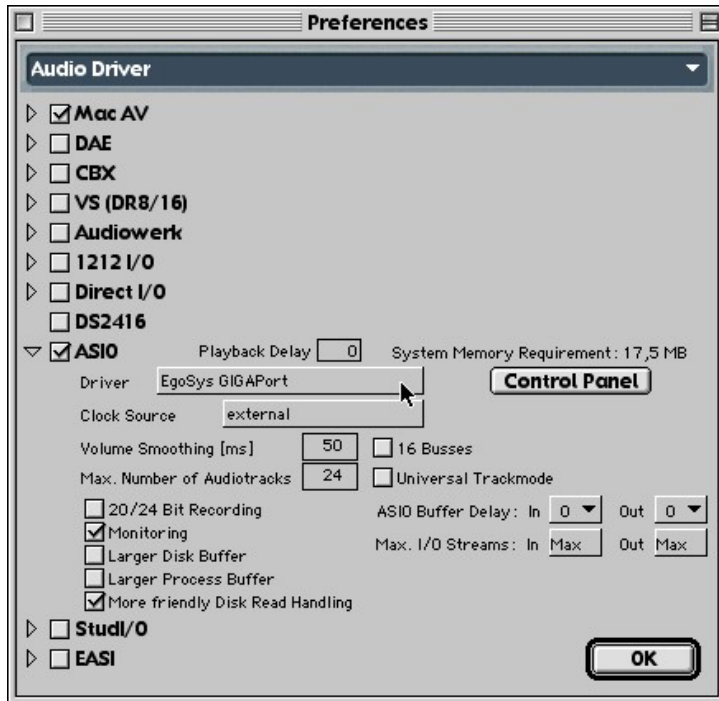
Cubase VST

After launching Cubase, choose the menu 'Options' -> 'Audio Setup' -> 'System'.
Select 'EgoSys GIGAPort' for the ASIO device.



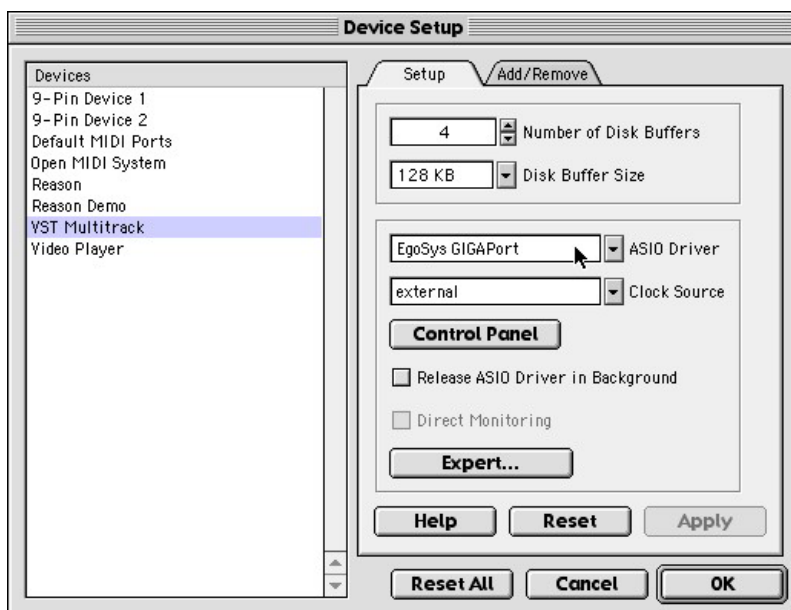
Logic

After launching Logic Audio, choose the menu 'Audio' -> 'Audio Hardware & Drivers'.
Select 'ASIO' check box and choose 'EgoSys GIGAPort' for the driver.



Nuendo

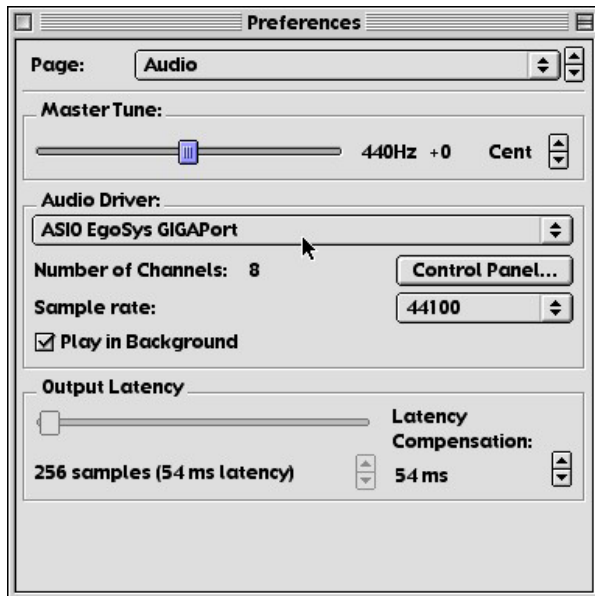
After launching Nuendo, choose the menu 'Devices' -> 'Device Setup'.
Click 'VST Multitrack' from the device list and choose 'EgoSys GIGAPort' for the ASIO Driver.



Reason

After launching Reason, choose the menu 'Edit' -> 'Preferences'.

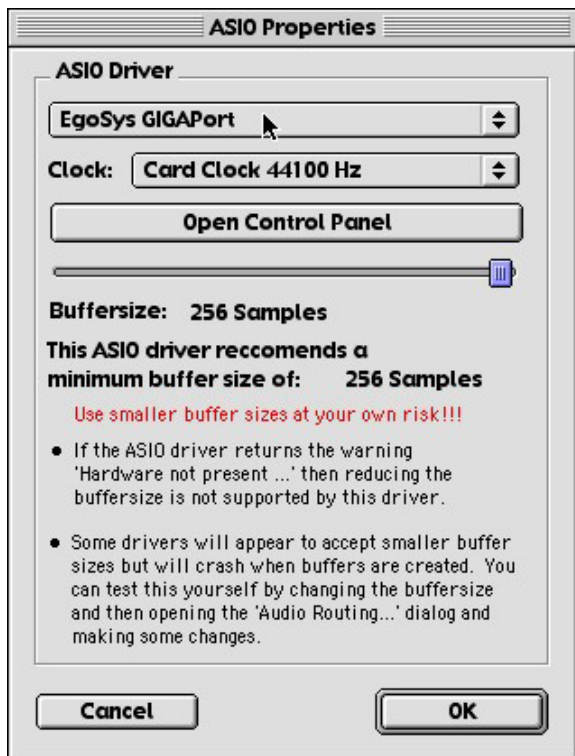
Choose 'Audio' for the 'Page', and choose 'EgoSys GIGAPort' for the Audio Driver.



Reaktor

After launching Reaktor, choose the menu 'System' -> 'Audio Settings'.

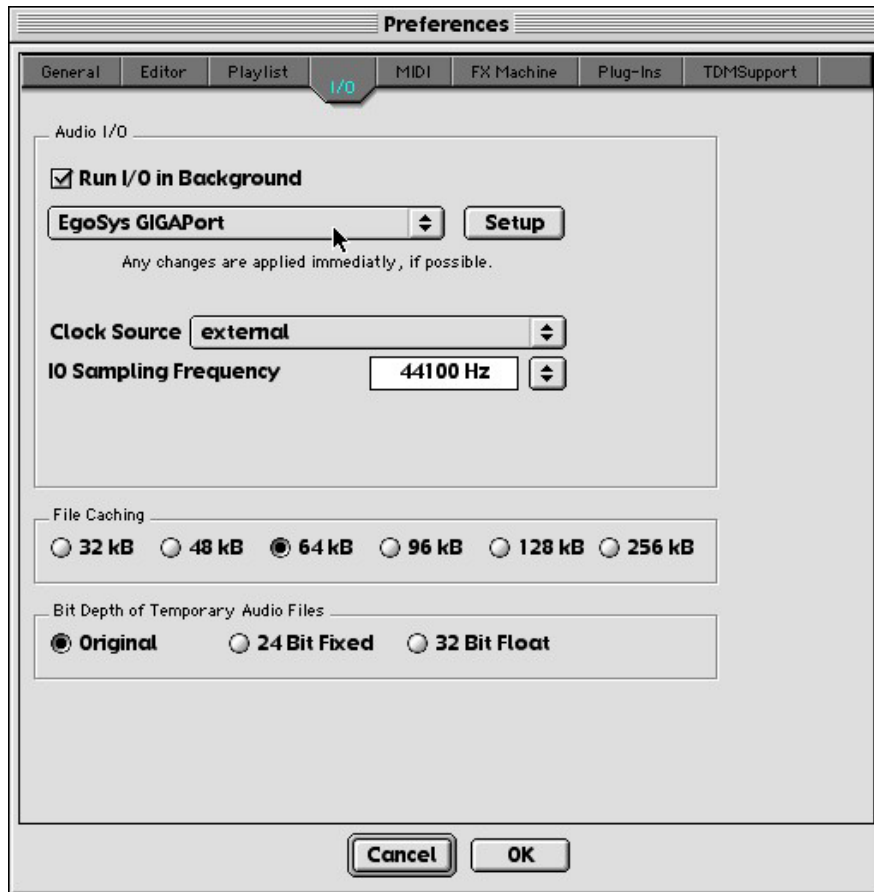
Choose 'EgoSys GIGAPort' for the Audio Driver.



Spark

After launching SPARK, choose the menu 'Edit' -> 'Preferences'.

Click 'I/O' tab and choose 'EgoSys GIGAPort' for the Audio I/O driver.



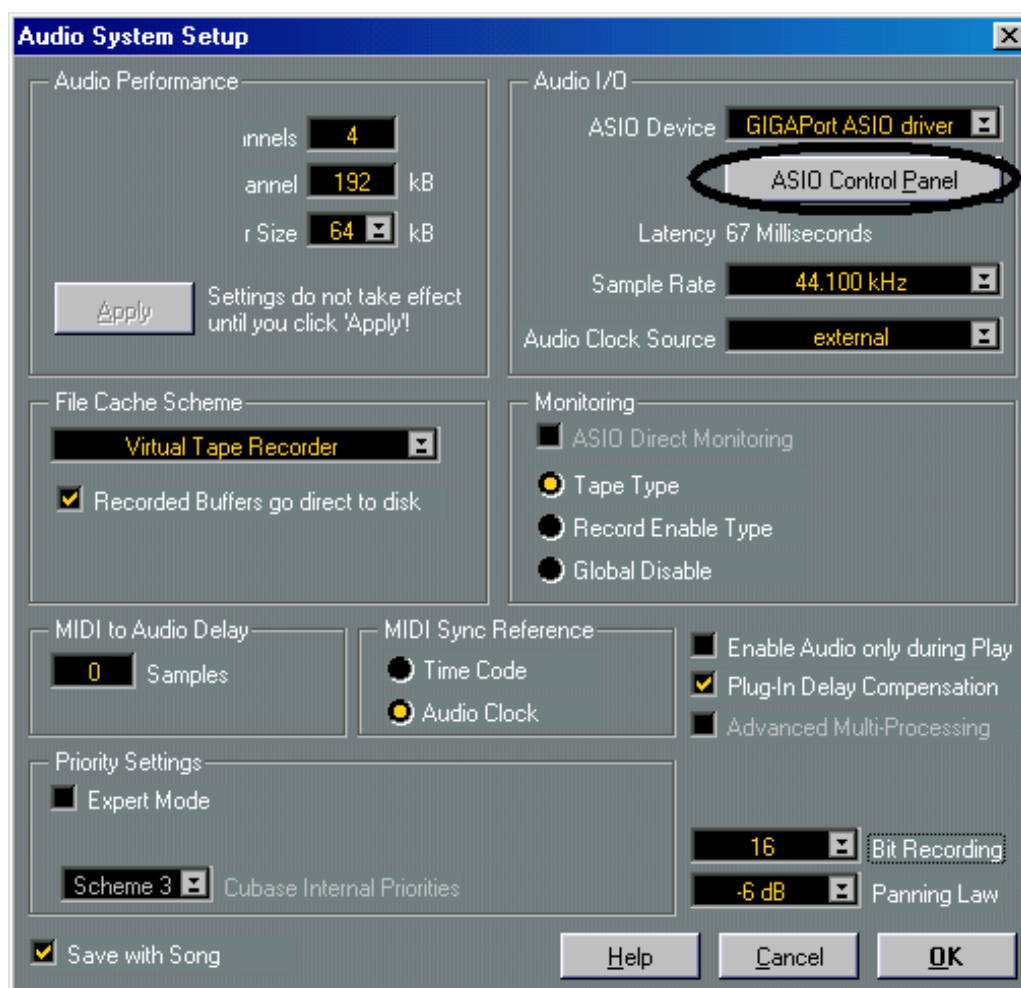
7. GIGAPort DG Control Panel

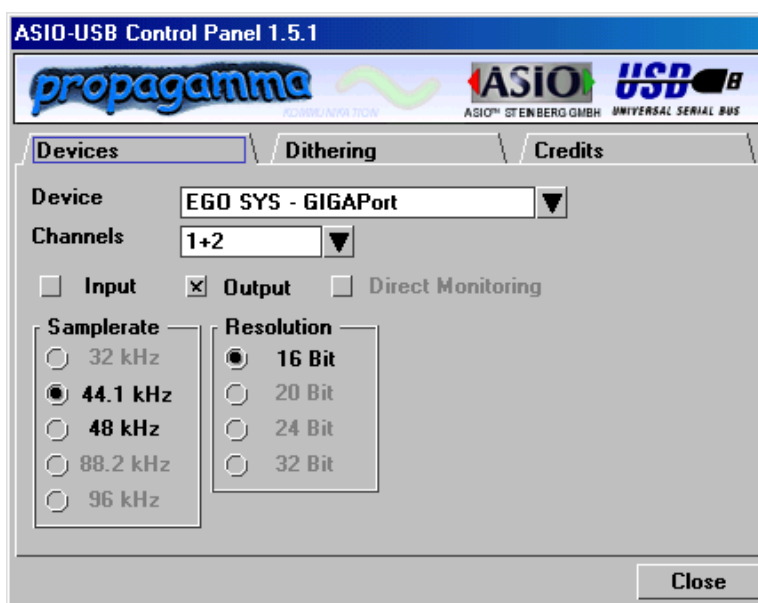
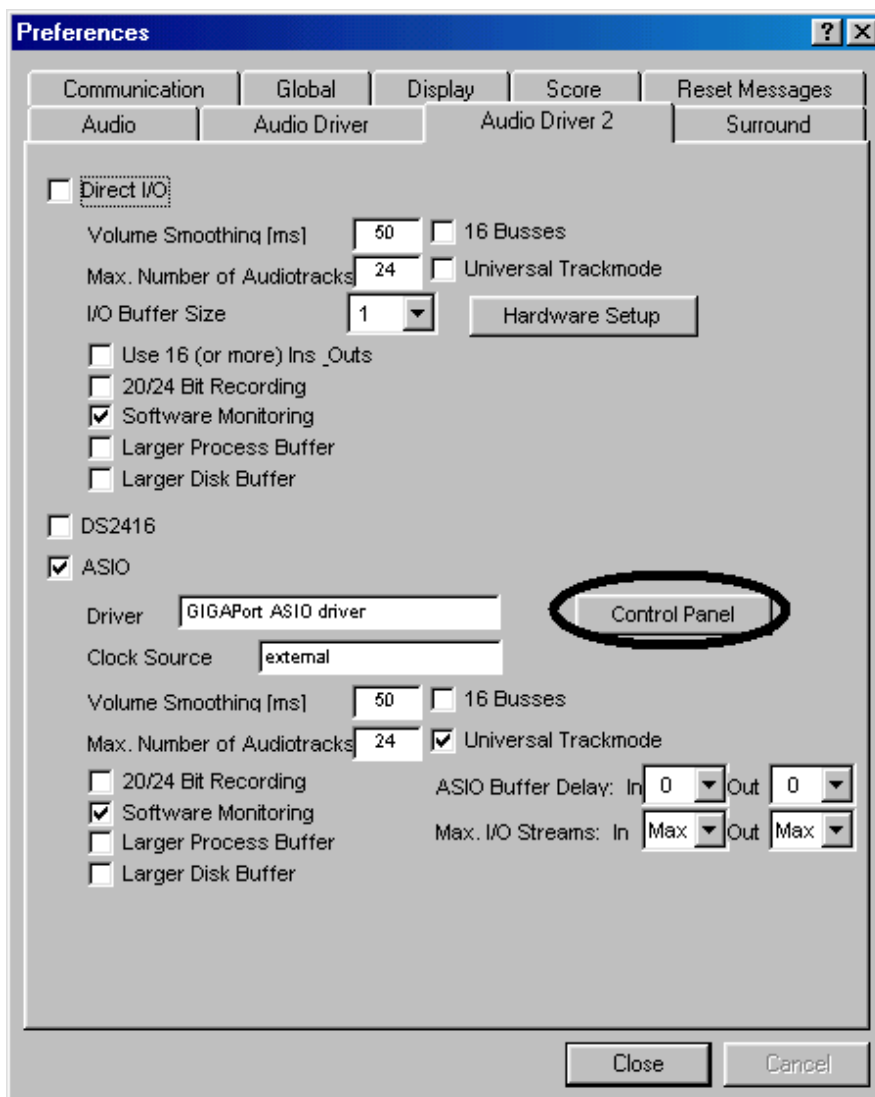
1) PC

If you have properly installed GIGAPort DG software driver, you can find GIGAPort DG control panel in your applications' audio setup menu.

Just click 'ASIO Control Panel' or 'Control Panel' in your application.

GIGAPort DG control panel will be appearing.





This control panel is pretty simple.

However you should be careful with 'System performance' in Dithering menu.

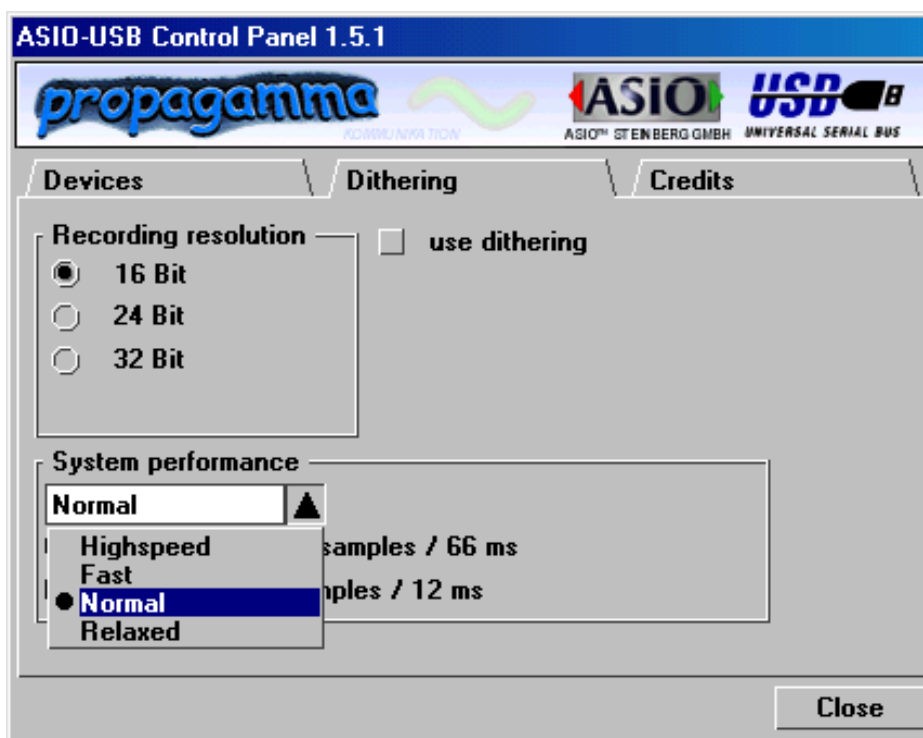
You have to choose the bit-rate of your recordings in 'Recording resolution'.

If your music file is 24bit recording and you're going to play it back via GIGApport's 16bit, you can use dithering to increase quality.

Also, you can choose four different system performance depends on your computer's efficiency.

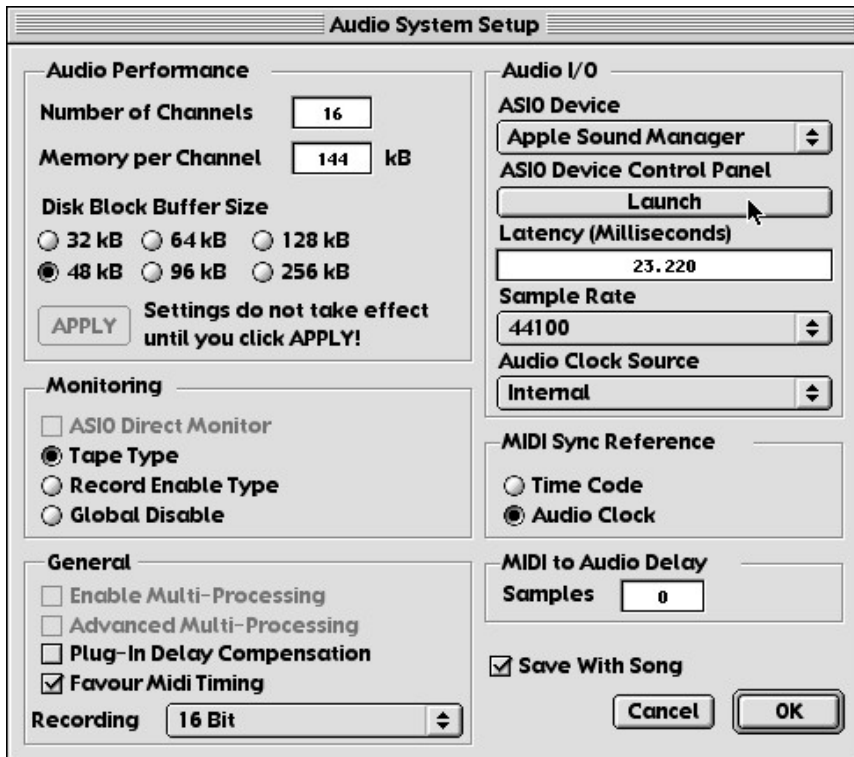
Choosing 'Highspeed' and 'Faster' will bring fast processing.

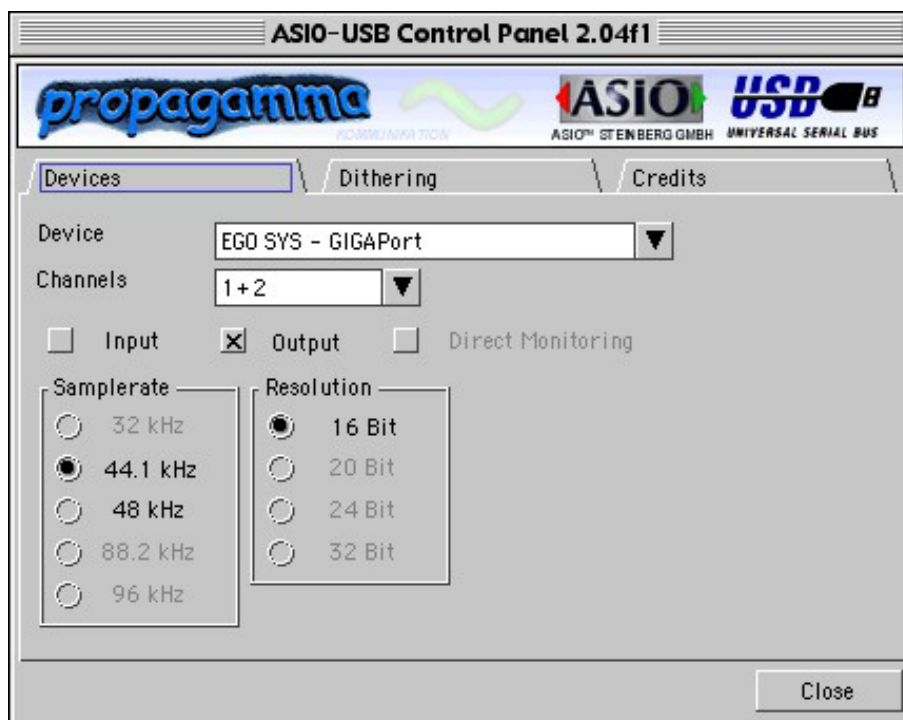
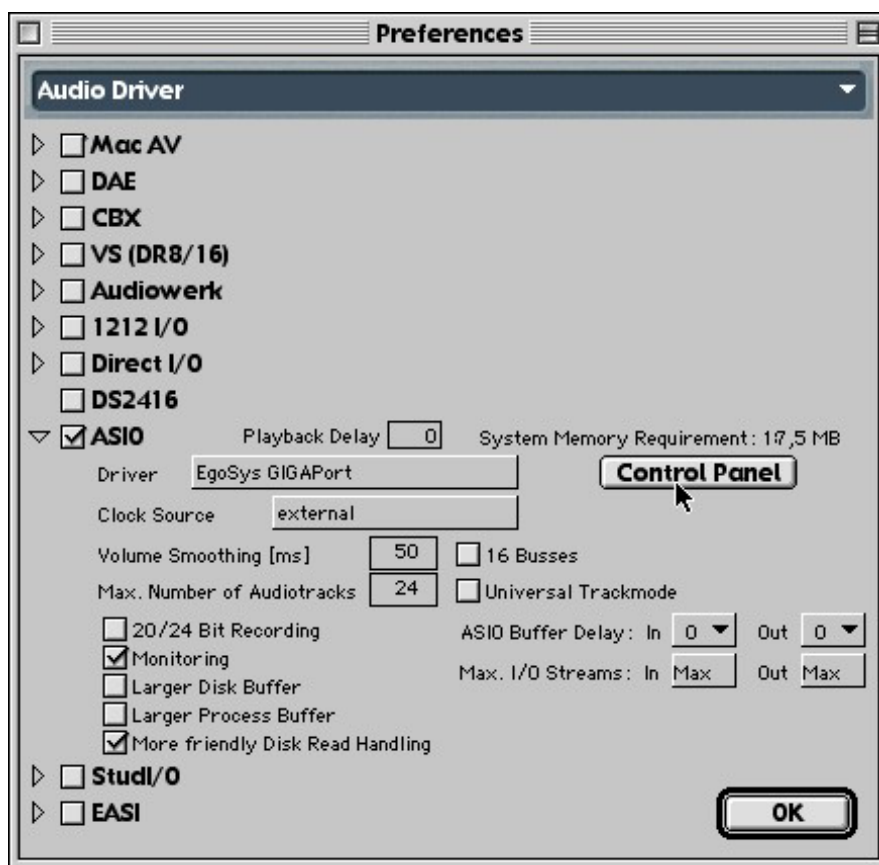
But if your computer has low efficiency and you select 'Highspeed', it cause noise problem. We generally recommend to you to select 'Fast' or 'normal'.



2) MAC

If you have properly installed GIGAPort DG software driver, you can find GIGAPort DG control panel in your applications' audio setup menu. Just click 'ASIO Control Panel' or 'Control Panel' in your application. GIGAPort DG control panel will be appearing.





This control panel is pretty simple.

However you should be careful with 'System performance' in Dithering menu.

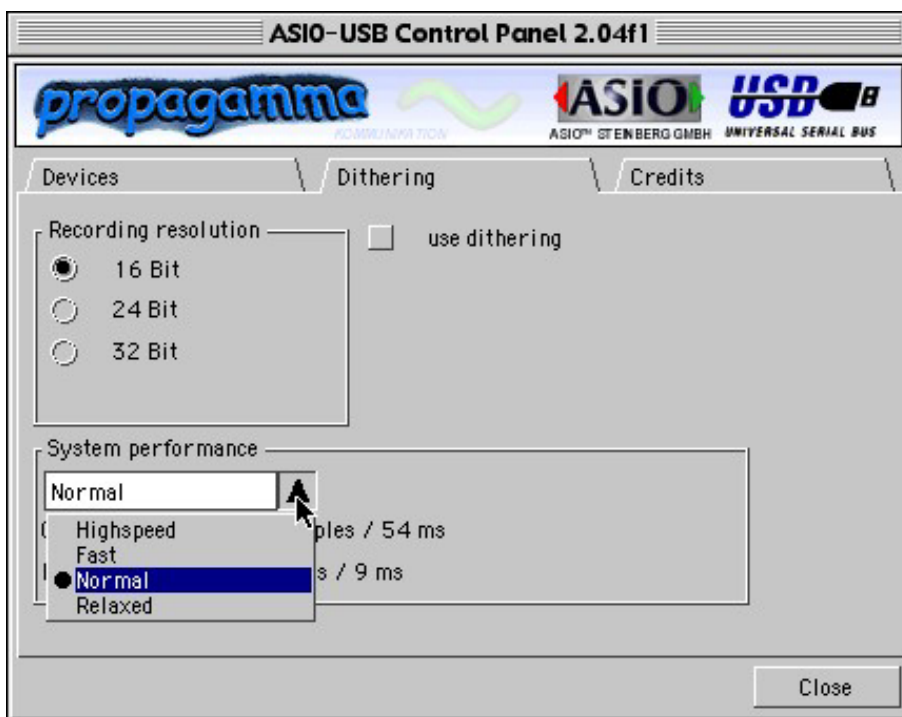
You can choose the bit-rate of your recordings in 'Recording resolution'.

If you have music file recorded 24bit and you're going to play it back via GIGAsport's 16bit, you have to select '24bit' on Recording Resolution. In this case, you can use dithering to increase quality.

Also, you can choose four different system performance depends on your computer's efficiency.

Choosing 'Highspeed' and 'Faster' will bring fast processing.

But if your computer has low efficiency and you select 'Highspeed', it cause noise problem. We generally recommend to you to select 'Fast' or 'normal'.



Specification

- 1. Interface : USB Spec Ver1.1, USB Audio Class Spec Ver1.0
- 2. Output Channel : Digital Audio 8-channel output
- 3. Output Format : ADAT Optical Output
- 4. Sample Rate : 44.1KHz, 48KHz
- 5. Bits Resolution : 16 Bits
- 6. Power : USB Bus powered - 100mA