

### **Correspondence:**

For technical support inquiries, contact your nearest dealer or EgoSys directly at:

Online Technical Support: <http://audiotrak.net/support.htm>

**EgoSys Inc. H.Q.**

6-9 Yong Moon Dong  
Yong San Gu  
Seoul, Korea

Website: [www.audiotrak.net](http://www.audiotrak.net)  
E-mail: [sales@audiotrak.net](mailto:sales@audiotrak.net)

### **Copyright 2002–2005 EgoSys Inc.**

It is forbidden to reproduce any parts of copyrighted materials in this manual without written permission from EgoSys Inc.

All features and specifications are subject to change without notice.



Chapter  
1

## Introducing the Product and System Requirements

- 1-1. Introducing AUDIOTRAK MAYA 5.1 MKII
- 1-2. Detailed Specification
- 1-3. System Requirements



Chapter  
2

## Package Contents

- 2-1. Package Contents
- 2-2. About MAYA 5.1 MKII



Chapter  
3

## Hardware Installation

- 3-1. Preparation for Hardware Installation
- 3-2. Installing MAYA 5.1 MKII PCI card



Chapter  
4

## Driver Installation

- 4-1. Disable Onboard Sound Device
- 4-2. Updating Your System with Chipset Patch and Windows Update (Service Pack)
- 4-3. Check Your Operating Systems (Windows)



Chapter  
5

## Driver Installation

- 5-1. Installing Windows 98SE/ME/2000/XP WDM drivers
- 5-2. Manual Installation (When Error occurs)



Chapter  
6

## "VIA Vinyl Audio Control Panel"

- 6-1. Speakers Set-up
- 6-2. Functions of Each Section
- 6-3. Functions of QSound



Chapter  
7

## FAQ / TIP

- Q : How can I remove the MAYA 5.1 MKII Control Panel and drivers?
- Q : My computer can't find the MAYA 5.1 MKII after rebooting.
- Q : My computer hangs or crashes during the device driver installation.
- Q : There's no input from microphone when I run voice calling application.
- Q : Playing music CDs on CD-ROM drive.
- Q : Unexpected sounds like flipping when playing audio CDs or DVDs.
- Q : I still hear a noise after I finished installing the driver flawlessly and made sure everything should work.
- Q : I need more detailed explanation and questions about using the products.

# MAYA 5.1 MK II

## CHAPTER 1 INTRODUCING PRODUCT AND SYSTEM REQUIREMENTS

### 1-1. INTRODUCING AUDIOTRAK MAYA 5.1 MKII

Thank you for choosing MAYA 5.1 MKII. MAYA 5.1 MKII is the newest version in AUDIOTRAK's low-priced and high-quality 5.1ch MAYA soundcard series. Improved and added features include a more compatible controller chipset, hi-fidelity and performance DAC/ADC, a stable circuit design for noiseless and clean sound, G9 port for easy connection jacks, and intergraded optical digital output.

MAYA 5.1 MKII has intergraded VT 1723 TREMOR™ chipset from ICEnsemble (VIA) Technology so you can hear clear and hi-fidelity 5.1 channel surround sound which makes MAYA 5.1 MKII easily outperform other low-priced and onboard sound systems. MAYA 5.1 MKII also supports Dolby™ digital and DTS™ pass thru to external decoders, and if your system has DVD & DivX playing software, you can enjoy DVDs and movie files encoded in AC3/DTS™ with 5.1 channel surround sound without Dolby™ digital and DTS(tm) decoders.

#### Reliable Device Drivers

The MAYA 5.1 MKII is compatible with Windows 98SE, ME, 2000, XP, and 2003. The driver, provided by ICEnsemble (VIA) technology, has good stability and compatibility.

#### New Controller Chipset and Stable Circuit Design

Being equipped with the ICE 1723 (ENVY24DT) controller chipset (the newest chipset) which is used only for high-quality sound cards, MAYA 5.1 MKII is able to provide the stability and high quality of sound. In addition, MAYA 5.1 MKII provides you the best performance with utilizing the fine parts like power regulator and grounding support as well as the optimal circuit design.

#### Expanding 2 Channels to 5.1 Channel Surround

MP3s, music CDs, Windows sound effects are usually 2 channel stereo sounds, MAYA 5.1 MKII will expand any 2 channel sound to 5.1 channel surround and mix rear channel and center/woofer channels to the front stereo channel for down-mixing as well.

### ■ Built-in Headphone Out and Muting Circuit

You can use built-in headphone out to listen to more clear sound. To reduce noise caused by the power from bus connection, Anti-Pop circuit has been added to cut-off the popping noise heard when turning on/off your system.

### ■ 3D Sound Acceleration

MAYA 5.1 MKII supports the QSound algorithm, so you can expect more efficiency and reliability. You can enjoy games that need EAX 1.0/2.0, A3D, DirectSound 3D and more with your MAYA 5.1 MKII.

### ■ Low-Profile Type board that supports slim-sized PCs and bare bone PC

MAYA 5.1 MKII includes additional Low-Profile type bracket so you can install it to both standard size ATX PC systems as well as slim size PC systems. To provide all the necessary jacks and ports in the compact sized LP board, MAYA 5.1 MKII integrates G9 port and multi-cable.

## 1-2. Detailed Specification

	AUDIOTRAK MAYA 5.1 MKII
<b>Output</b>	5,1 channel (G9 to 4Phone Jack/Coaxial, Headphone optional)
<b>Input</b>	Mic In, Line In
<b>Card Type</b>	PCI, LP (LowProfile)
<b>Digital Out</b>	Optical & Coaxial (optional)
<b>Support Frequency</b>	44,1kHz, 48kHz (Digital - 96kHz)
<b>O/S</b>	Windows 98SE, ME, 2000, XP, 2003

\* Remarks : Windows 98SE users cannot get all featured supports MAYA 5.1 MKII provides, especially for QSound functions. To make it functionally stable, Windows ME of later version is required.

# MAYA 5.1 MK II

## 1-3. SYSTEM REQUIREMENTS

Meeting system requirements is important to take advantage of the MAYA 5.1 MKII. Even though the MAYA 5.1 MKII is built to work in low CPU dependability mode, the performance of the MAYA 5.1 MKII is affected by the computer specs that are required to process the vast amount of digital data. A system with faster CPU, faster hard disk, and larger amounts of RAM are recommended for heavy duty operation.

Minimum Specification	Recommended Specification
1. Intel Pentium4 450MHz CPU or equivalent AMD CPU	1. Intel Pentium4 1.8G CPU or equivalent AMD CPU
2. Motherboard with Intel/VIA/AMD chipset	2. Motherboard with Intel chipset
3. 128MB of RAM	3. 256MB of RAM
4. One available PCI slot	4. One available PCI slot
5. UDMA 33 hard disk drive	5. UDMA 66/100, 7200rpm hard disk drive
6. CD-ROM, 24X or faster	6. CD-ROM, 40X or faster
7. Powered 2 channel speaker	7. Powered 5.1 channel speaker
8. Microsoft Windows 98SE/ME/2000/XP/2003	8. Microsoft Windows 98SE/ME/2000/XP/2003

\* Make sure you are equipped with a DVD-Rom drive and playing software to play DVD titles. Especially, when you play DivX movies, the faster PC is needed.

## CHAPTER 2 PACKAGE CONTENTS AND DETAILS

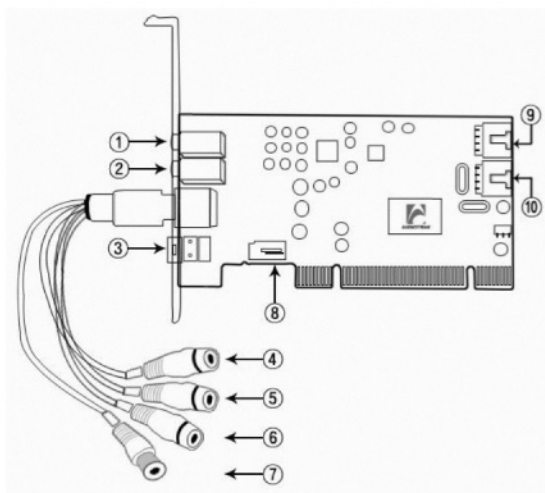
### 2-1. PACKAGE CONTENTS

#### MAYA 5.1 MKII

- MAYA 5.1 MKII PCI card
- User's Manual
- Installation CD
- G9 analog 4 phone jack cable (Coaxial vs. Headphone output optional)
- LP bracket

\* Remarks : Maya 5.1 MKII has two Versions, One with a Stereo Headphone output and the other with a S/PDIF Coaxial Output. Coaxial vs. Headphone versions are marked by sticker on the MAYA 5.1 MKII retail box.

## 2-2. ABOUT MAYA 5.1 MKII



MAYA 5.1MKII(Coaxial version)

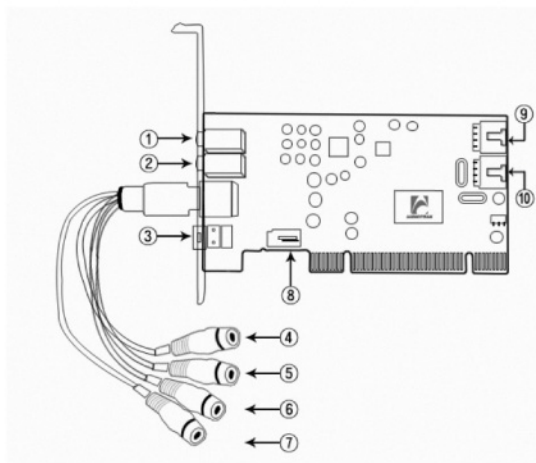
### [External connectors]

1. MIC In (Pink): Connecting to a microphone (5V condenser or dynamic type).
2. Line In (Blue): Connecting to an external device (TV cards or Mini Disc players).
3. Optical Digital Out: Connecting to an external digital device.
4. Front Out (Red): Connecting to the front speakers.
5. Rear Out (White): Connecting to the rear speakers.
6. Center/Woofer Output (Yellow): Connecting to the center and subwoofer speakers.
7. Coaxial digital Output (Black): Connecting to an external digital device.

### [Internal connectors]

8. S/PDIF Out (2Pin): For the Coaxial digital output cable and extension bay.
9. CD-In (Green): Connecting to a CD-ROM or DVD-ROM drive with an analog cable (AC97 Standard).
10. AUX-In (White): Connecting to internal audio sources like TV Card, etc.

# MAYA 5.1 MK II



MAYA 5.1 MKII (Headphone version)

### [External connectors]

1. MIC In (Pink): Connecting to a microphone (5V condenser or dynamic type).
2. Line In (Blue): Connecting to an external device (TV cards or Mini Disc players).
3. Optical Digital Out: Connecting to an external digital device.
4. Front Out (Red): Connecting to the front speakers.
5. Rear Out (White): Connecting to the rear speakers.
6. Center/Woofer Output (Yellow): Connecting to the center and subwoofer speakers.
7. Headphone Output (Green): Connecting to a headphone.

### [Internal connectors]

8. S/PDIF Out: For the Coaxial digital output cable and extension bay.
9. CD-In (Black): Connecting to a CD-ROM or DVD-ROM drive with an analog cable (AC97 Standard).
10. AUX-In (White): Connect to internal audio sources like TV Card, etc.

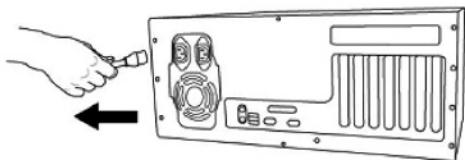
\* Caution: Always keep the protective cover on when not using an optical cable. When connecting an optical cable, never point the optical connector directly into your eyes, as the light can cause eye damage.

## CHAPTER 3 HARDWARE INSTALLATION

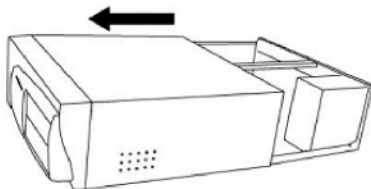
### 3-1. PREPARATION FOR HARDWARE INSTALLATION

Before you begin the installation, please refer the PC manual for detailed instructions on installing a PCI card in your computer.

- 1) MAYA 5,1 MKII PCI card is packaged in an anti static plastic pouch. Do not open the pouch until you're ready to install the card.
- 2) Turn off the computer and remove the power cable form your computer's power supply.



- 3) Remove the cover. Make sure that you have free PCI slots available on your motherboard to install the MAYA 5,1 MKII. Please refer to your computer's user manual on how to remove the cover.

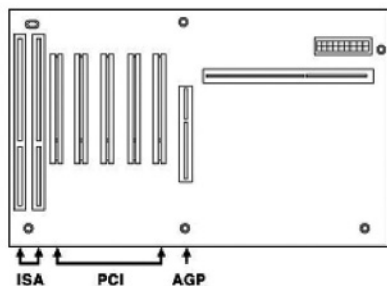


# MAYA 5.1 MK II

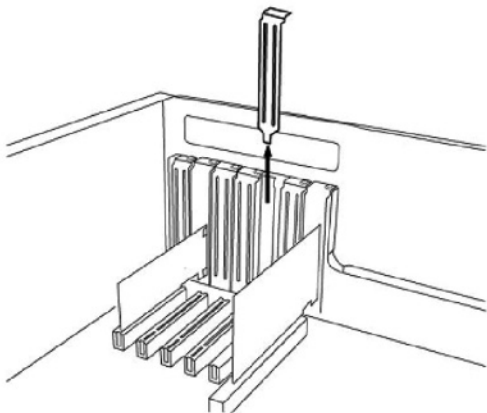
- 4) To avoid possible static shock to the computer parts, discharge it by touching the computer case or something grounded. We recommend you to use an anti-static device such as an anti-static wrist band.
- 5) When you need to hold the card, please hold it on the bracket or the edge of the card. Do not hold the card by the board.

## 3-2 Installing MAYA 5.1 MKII PCI card.

- 1) Look for an empty PCI slot. If you do not know which one is a PCI slot, please refer to the following.
- 2) The PCI slot is the most common and is used for a wide range of devices, from sound cards to modems. Usually, the PCI slot is the white-colored slot. It should not be too hard to find the slot for the MAYA 5.1 MKII.



- 3) If there is a bracket blocking the empty slot, please remove it using the proper screw driver (it is better not to put sound cards in the slot just next to the AGP slot).



4) Put the card gently but firmly into the slot until the connector is fully inserted. Don't force the card to be put into the slot and never bend it in any way and make sure it is placed in the slot correctly.

**\* Caution:** Make sure it is correctly placed in the slot again. When you turn on the computer without correct installing the card, it may damage the soundcard as well as your system.

5) After the card is installed, replace the computer's main cover. Connect your speakers with a built in Power Amp to the card.

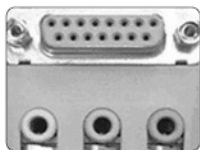
# MAYA 5.1 MK II

## CHAPTER 4 DRIVER INSTALLATION

After completing the installation of hardware and speakers setup done for the MAYA 5.1 MKII, you are supposed to install the MAYA 5.1 MKII driver software. We recommend users to verify their system settings before installing the driver.

### 4-1. DISABLE ONBOARD SOUND DEVICE

Most of the recently made main boards have a sound card built-in. However, most of the integrated sound devices will not satisfy your expectations from a sound card because of low level, low quality and noises. When updating your system with a PCI sound card, it may conflict and introduce problems when both the sound card and the onboard sound chip are enabled. If three stereo ports are sighted on the main board, your board must have a sound card built-in. We recommend you disable the onboard sound chip in your motherboard's BIOS settings. Here is the basic information on how to disable the onboard sound chip on popular motherboards.

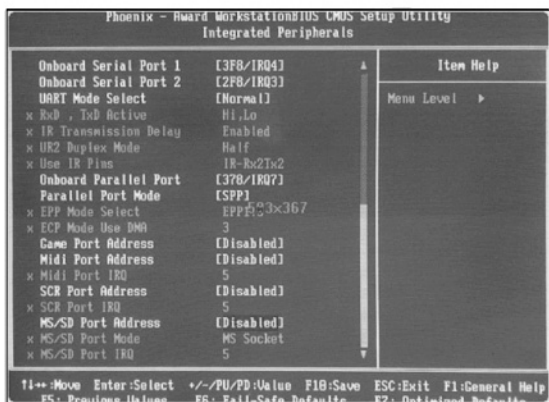
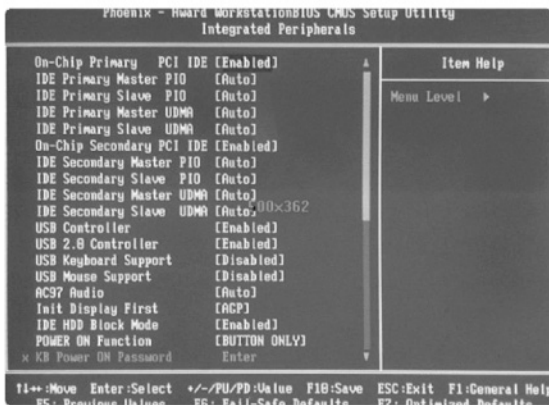


\* Caution: If any problems occur and you don't know how to disable the onboard sound in the CMOS setup, you should refer to the motherboard's manual or ask your main board's service center about the correct procedure

- 1) Turn on your computer and keep pressing DEL key to go to the CMOS (or BIOS) setup. (For some motherboards, you may need to press F1, F2, or F10 instead)
- 2) Find Integrated Peripherals on the screen (If you can't find sound set-up categories in Integrated Peripherals, select Advanced setting or Chipset Setting).
- 3) Change [Enabled] to [Disabled] next to Onboard Sound, AC97 Audio, MIDI, Game port.
- 4) Press [ESC] to return to the previous menu. Select Save & Exit and press [Enter].

## ■ Motherboards with VIA chipset

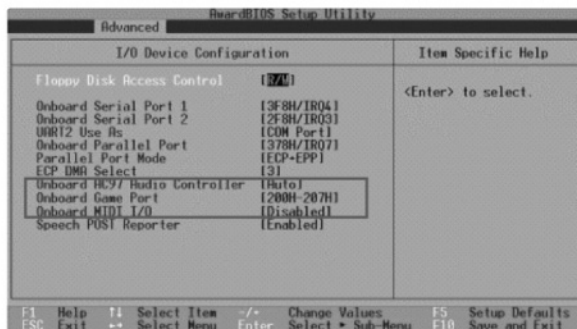
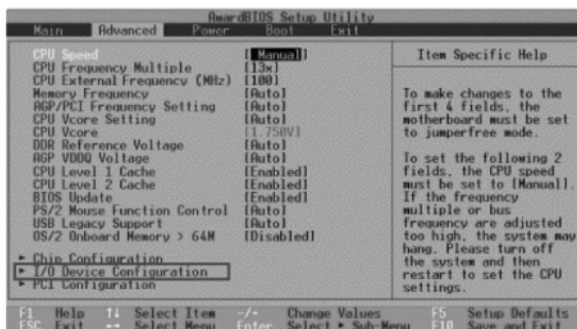
- Integrated Peripherals → [Enter] → Via On-chip PCI Device → VIA AC97 AUDIO DEVICE → [Disabled]
- Integrated  Peripherals → [Enter] → Super I/O Device → Game Port Address → [Disabled] and Midi Port Address → [Disabled]



# MAYA5.1 MK II

## ■ Motherboards with INTEL chipset

- Integrated Peripherals → [Enter] → AC97 AUDIO → [Disabled] → Game Port Address and Midi Port Address → [Disabled]



For your information, setting up the CMOS (or BIOS) and the procedure to disable the built in sound can look differently on different main boards. Use the preceding only for reference, and if there are differences between the above contents and your board, we recommend consulting the main board's manual or service center about the correct procedure.

## 4-2. Updating Your System with Chipset Patches and Windows Update (Service Pack)

When your soundcard makes noises and installation errors occurs right after installing a new sound card, usually the problems are related to the missing chipset patches or Windows updates or service packs. You must check if you have all the latest fixes for your system and other devices especially if you have freshly installed your Windows operating systems (You can download Windows updates and service pack files at Microsoft's website and the motherboard chipset patches can be found and downloaded at the motherboard manufacturer's website).

## 4-3. Check Your Operating Systems (Windows)

MAYA 5.1 MKII supports Windows Driver Model (WDM) which is compatible with Windows 98SE or later version of Windows (SE means Second Edition, an extended version of Windows 98).

How to check the version of your Windows 98

Double-click My Computer > Control Panel > System

Windows 98SE – 4,10,2222A

Windows 98□□ – 4,10,1998

\* Caution: MAYA 5.1 MKII does not work under Window 98 (It requires Windows 98SE or later). To finish the MAYA 5.1 MKII driver installation completely, the original Windows installation CD may be required.

# MAYA 5.1 MK II

## CHAPTER 5 DRIVER INSTALLATION

### 5-1. INSTALLING WINDOWS 98SE/ME/2000/XP WDM DRIVERS

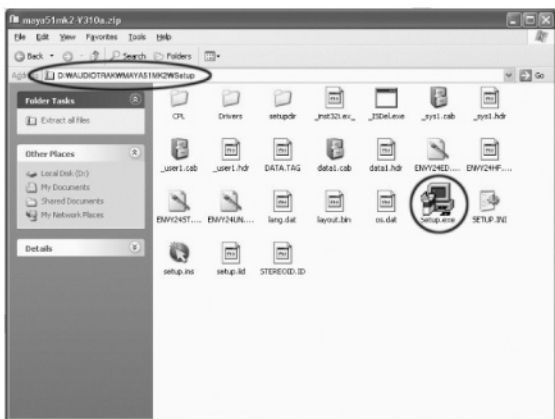
- 1) Turn on your computer. Windows will automatically detect a new device and the "Found New Hardware Wizard" window will appear.

\* Caution: Please follow the installation steps below. If you use "Found New Hardware Wizard", the device drivers will be installed without VIA Vinyl Audio Control Panel.



[Windows XP]

- 2) Click "Cancel" and insert the install CD to the CD-ROM drive. Then, run the "setup.exe" file.



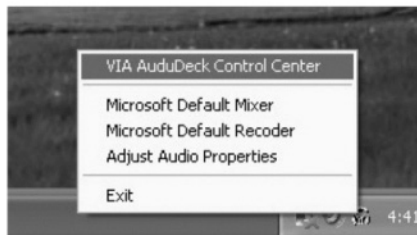
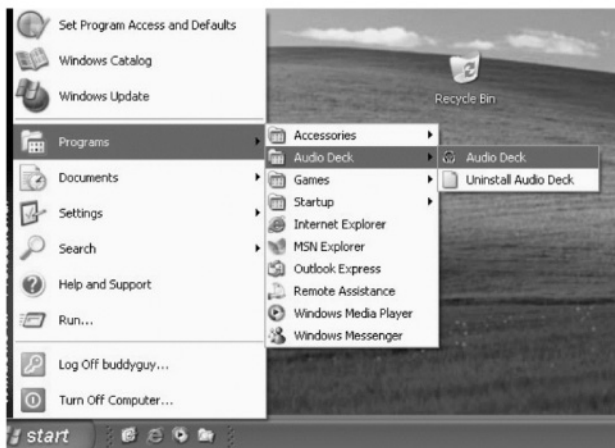
- 3) When the installation is completed, click Finish and reboot your computer.



# MAYA 5.1 MK II



- 4) After rebooting, the control icon will appear in the system tray and "Audio Deck" control program will be added to the Programs menu.



- 5) Click "VIA Vinyl Audio Control Panel" icon to launch the control panel in order to set the sound card's configuration.

Click the system tray icon to open the control panel.

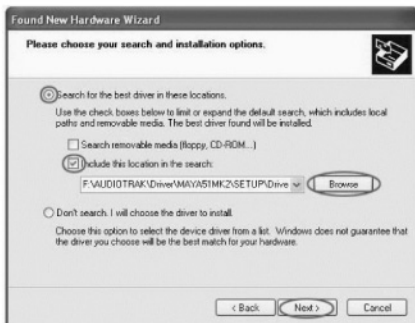
# MAYA 5.1 MK II

## 5-2. Manual Installation (When Error occurs)

1) The driver as well as the control panel program must be installed by running "SETUP.EXE" in order to control the functions of the MAYA 5.1 MKII. If a problem during setup occurs, or you need to reinstall the driver, follow the procedure described below:

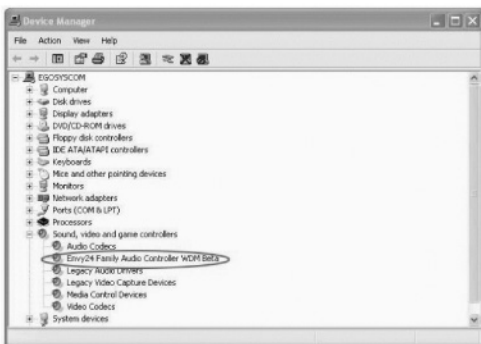
※**Note** : Refer to chapter 7 (FAQ/TIP), "Q: How can I remove the MAYA 5.1 MKII Control Panel and drivers?" for removing the driver and the control panel.

2) After removing the existing driver and rebooting the computer, the "Found New Hardware Wizard" will appear automatically. Then install the driver as the installation steps shown below.





# MAYA 5.1 MK II



- 3) If the driver has been installed flawlessly, the MAYA 5.1 MKII device will be registered in "Sound, Video and Game controllers".

**\* Caution :** Use this procedure if the control panel has already been installed. Else, use the procedure described in chapter "5-1. INSTALLING WINDOWS 98SE/ ME/ 2000/ XP WDM DRIVERS".

### 6-1. SPEAKERS SET-UP

- 1) MAYA 5.1 MKII supports 6 channels, 5.1 surround sound. You can choose the suitable speaker set-up at the upper section of the control panel.

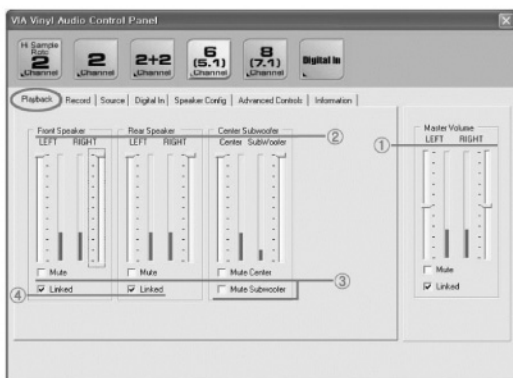


- 2 channel or 2.1 channel speakers: Choose A - 2Channel
  - 4 channel or 4.1 channel speakers: Choose B - 2+2Channel
  - 5.1 channel or 6 channel speakers: Choose C - 6(5.1) Channel
  - Digital output is the default setting
- 2) Don't select "Hi Sample Rate 2 Channel", "8(7.1) Channel", or "Digital In". These settings have nothing to do with MAYA 5.1 MKII.

\* Caution : If you select "Hi Sample Rate 2 Channel", front channel volume control will disappear. In this case, close the control panel and restart it.

# MAYA 5.1 MK II

## 6-2. FUNCTIONS OF EACH SECTION

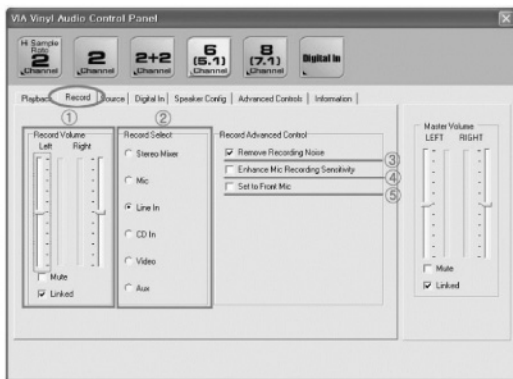


### 1) Playback

You can control the master volume and output volumes of each channel.

- ① Adjusting master volume
- ② Adjusting the volume of each channel
- ③ Muting and un-muting each channel.
- ④ Linking or un-linking the left and right level faders of each channel.

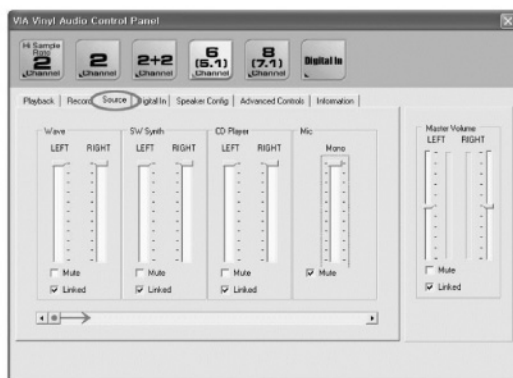
\* Caution : Setting the volume level too high can generate unexpected noises.



### 2) Record

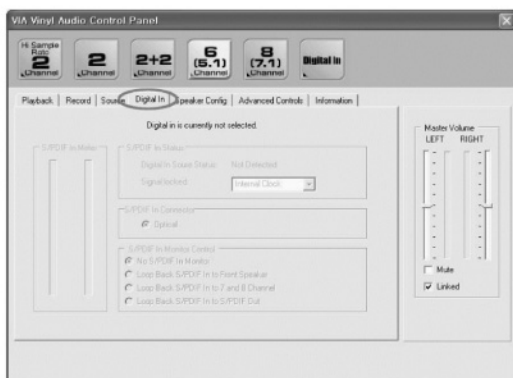
You can set the recording options.

- ① Adjusting recording gain
- ② Selecting a recording source
- ③ Reducing noises during recording.
- ④ Amplifying MIC input by 20dB (Enable this when MIC input gain is too weak)
- ⑤ Connecting MIC port to the front bay (MAYA 5.1 MKII does not support this function)



### 3) Source

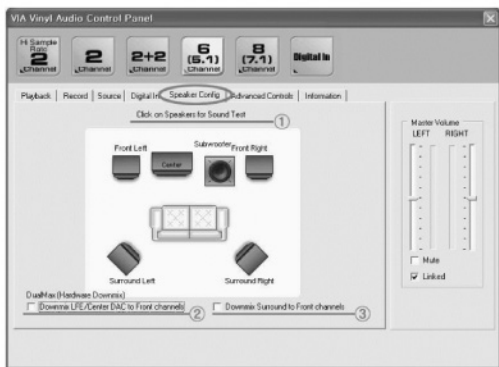
You can control input levels (gain) of internal or external sources. Drag the scroll bar in the lower portion of the window to gain access to more input sources. When using MIC or Line input, make sure to un-mute the selected channels.



### 4) Digital In

MAYA 5.1 MKII series don't have the digital input port, please ignore this tab.

# MAYA5.1 MK II

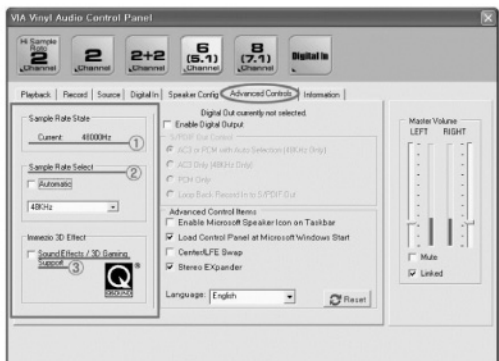


## 5) Speaker Configuration

You can test speakers and enable "down mix" features.

- ① Testing speakers. (Click the speaker you want to test.)
- ② Mixing center/sub-woofer speaker sound to front speakers.
- ③ Mixing rear speaker sound to front speakers.

\* Caution : When listening AC3/ DTS™ encoded multi-channel surround sound from a movie or music, don't choose ② nor ③ (Rear/center/LFE sounds will be doubled to the front channel.) Use ② and ③ when listening multi-channel sound mixed to stereo headphones or 2 channel speakers.



## 6) Advanced Controls (1)

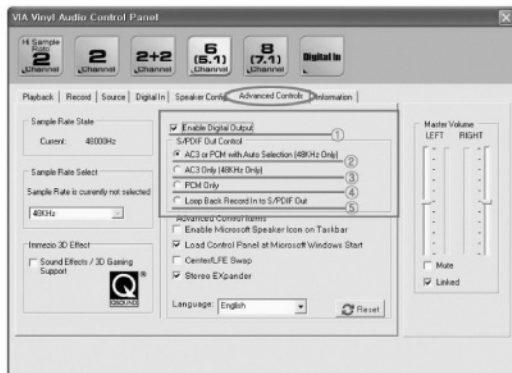
Here you can set up the sample rate, digital output and 3D sound acceleration, and so on.

- ① The current sample rate of the outputted sound.
- ② Changing the sample rate of the outputted sound. When the "Enable Digital Output" check box is cleared, the "Automatic" check box in the "Sample Rate Select" box becomes selectable. After checking this check box, the correct sample rate is selected automatically.

③ Enabling/disabling QSound (When QSound is enabled, the QSound tab will appear in the upper menu after rebooting).

\* Caution

- Select "48000Hz" or "Automatic" in the sample rate box to use the function of pass thru.
- Disabling "Immerzio 3D Gaming support" requires a system reboot.
- Choose "Disable" if you want to listen to unaltered sound. Many effects of QSound will distort the original sound.
- Window 98SE does not support the QSound feature. To use it, Windows ME or a later version is needed.



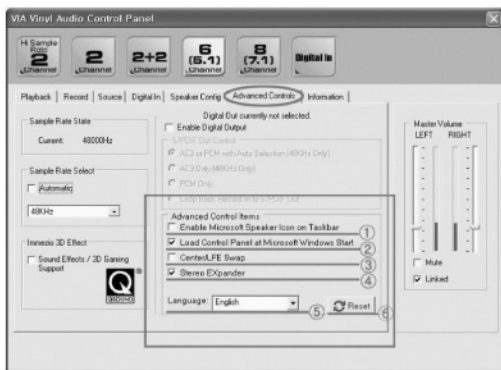
## 6) Advanced Controls (2)

You can configure digital output options.

- ① Enabling digital output (You must select this in order to use digital output).
- ② Auto-detecting AC3 or PCM output stream (Fixed at 48 kHz).
- ③ Using AC3 output only (Fixed at 48 KHz).
- ④ Using PCM output only. You can change options (auto, 44,1 kHz, 48 kHz) in Sample Rate and Immerzio boxes.
- ⑤ Enabling pass-thru (loop back) of MIC and Line-in input sound to S/PDIF output.

- \* Caution: "Loop Back" means exporting input sounds to the S/PDIF digital output, not playing the sound. To avoid too loud volume level and noises, choose the input devices you desire and turn down the volume in the "Record" tab. Windows 98 and 98SE does not support AC3 completely. Please use Windows ME or a later version to support the feature.

# MAYA5.1 MK II

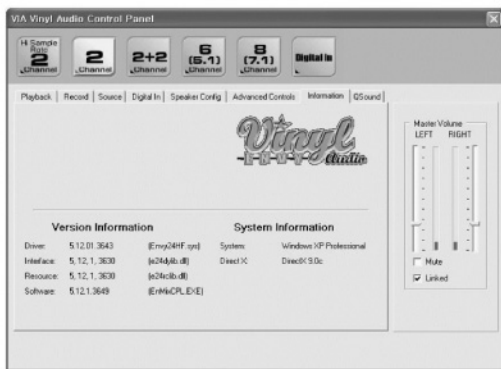


## 6) Advanced Controls(3)

You can set up advanced options.

- ① Showing Windows audio mixer on system tray
- ② Showing VIA Vinyl Audio Control Panel icon on startup
- ③ Swapping center output with sub-woofer output.
- ④ Exporting front channels output to rear/center/sub-woofer channels when playing 2 channel music or movie.

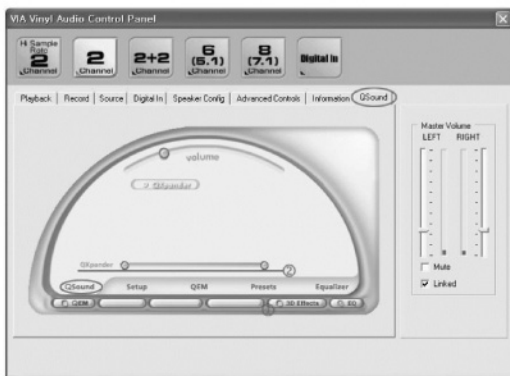
- ⑤ Changing the language of VIA Vinyl Audio Control Panel.
- ⑥ Resetting the functions of "Advanced Controls"



## 7) Information

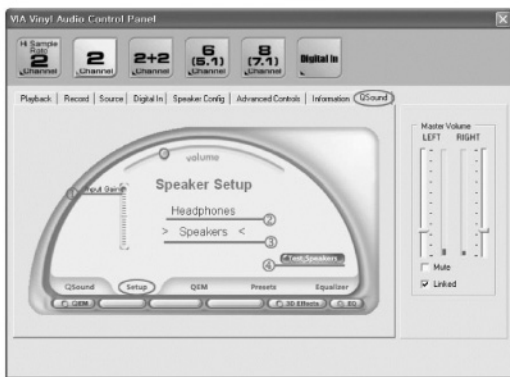
This tab will show the device driver version and other information.

## 6-3. The functions of QSound



### 1) QSound

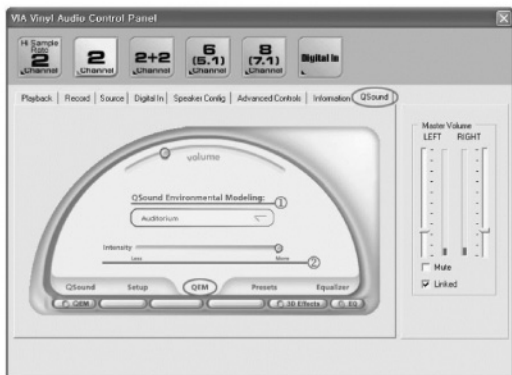
- ① QXpander On/Off (It is for mono-to-3D and stereo-to-3D stereo sound stage synthesis and enhancement.)
- ② Adjusting the intensity control for QXpander.



### 2) Setup

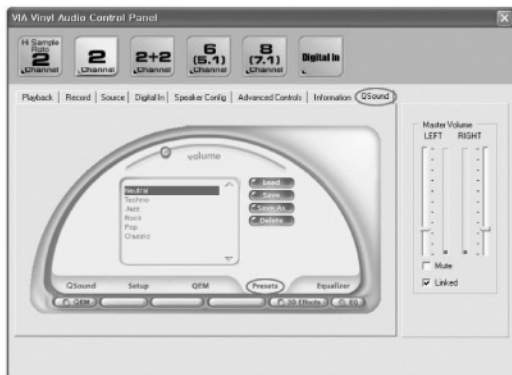
- Adjusting the speakers
- ① Input / Output control
  - ② Selecting Headphone output
  - ③ selecting Speaker output
  - ④ Be able to test your speakers with this tab.

# MAYA 5.1 MK II



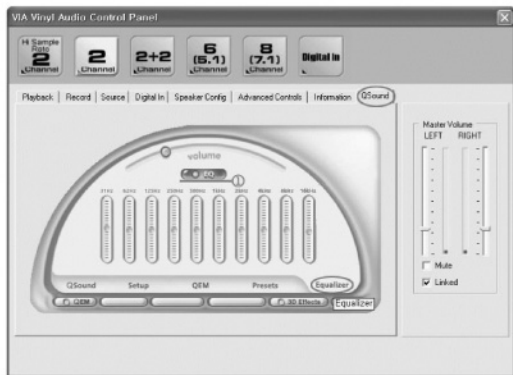
### 3) QEM

- ① You can select your acoustic environment simulation from the 15 choices
- ② This is the intensity control for QEM



### 4) Presets

You can save and load the setting up of QSound.



## 5) Equalizer

This is the equalizer for QSound.

① EQ ON: It is On/Off switch for the EQ effect.

\* Caution: Too many uses of effects by QSound may distort the original sound.

# MAYA 5.1 MK II

## CHAPTER 7 FAQ / TIP

This chapter provides some general solutions to problems you may encounter during installation or normal use. Please check these before you consult technical support for trouble shooting.

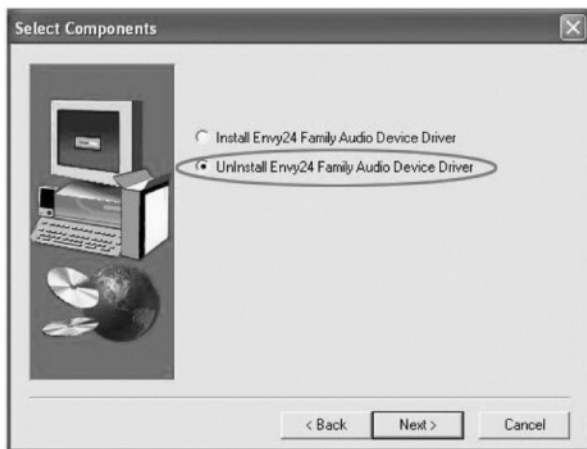
**Q : How can I remove the MAYA 5.1 MKII Control Panel and drivers?**

**A :** Follow this instruction.

- 1) To remove Control Panel, Click Start → Program → Audio Deck → Uninstall Audio Deck.



- 2) To remove the drivers, double-click the Setup.EXE file in the Setup folder (AUDIOTRAK \ Driver \ MAYA51MK2 \ Setup). Then, check "Uninstall Envy24 Family Audio Device Driver" and click Next.



**Q : My computer can't find the MAYA 5.1 MKII after rebooting.**

A : Check if the soundcard is inserted into a PCI slot firmly. Sometimes a PCI slot may be in a bad condition. In this case, pull out MAYA 5.1 MKII from the motherboard and try to insert it in any of the other empty slots.

**Q : MY computer hangs or crashes during the device driver installation.**

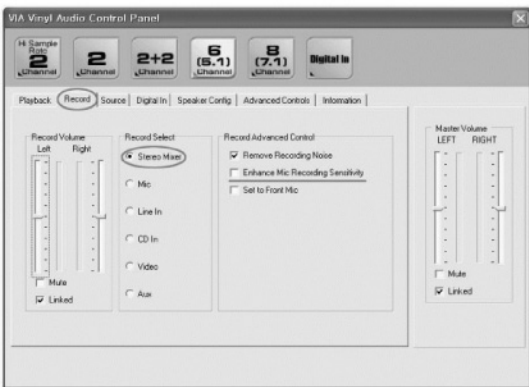
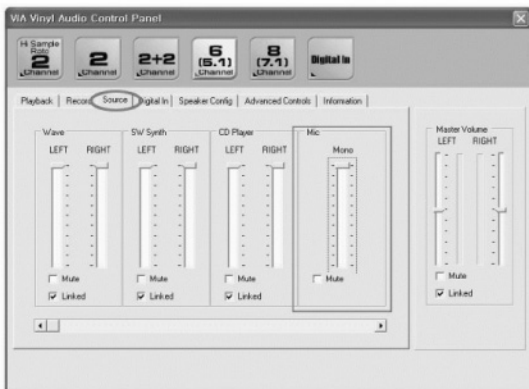
A : MAYA 5.1 MKII may cause a hardware crash and conflicts with other devices like onboard sound chip. Please disable onboard sound device. If the problems don't disappear, remove all PCI devices from the PCI slots except the MAYA 5.1 MKII and test it again.

★Please refer to chapter 4-1. Disable onboard sound device.

# MAYA5.1 MK II

**Q : There's no input from microphone when I run voice chatting application.**

**A :** Open the VIA Vinyl Audio Control Panel, Clear the mute check box under "Mic" in Source tab to enable Mic input, Select Stereo Mixer or Mic in Record tab,

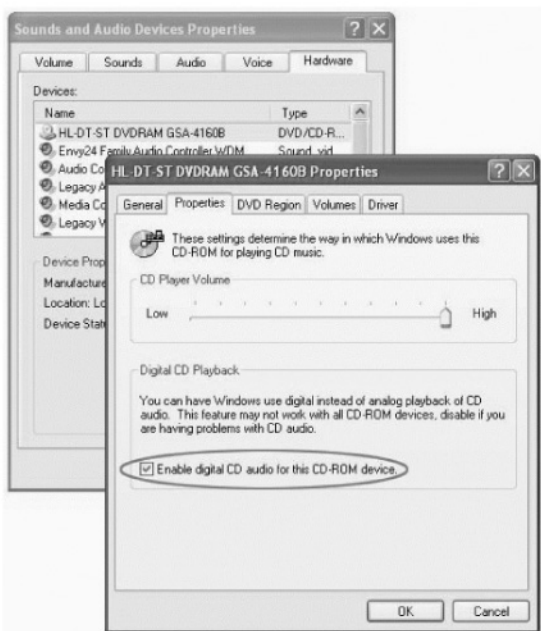


### Q : Playing music CDs on CD-ROM drive.

Usually, many people use 3-pin analog cable to connect the CD-ROM drive to the soundcard. However, analog output may not deliver high quality sound because of low-grade DAC (Digital-to-Analog Converter) on the CD-Rom drive. We recommend you to use digital audio extraction (CDDA) for listening to music CDs from the CD-Rom drive. This method works without connecting an analog cable between the CD-ROM and the soundcard.

Here is some information about how to enable digital audio extraction on your CD-ROM drive.

Click Start → Settings → Control Panel. In the Control Panel dialog box, double-click the System icon. In the System Properties dialog box, click the Hardware tab. Click the Device Manager button. Double-click the DVD/CD-ROM drives icon. Your computer's drive icons will appear. Right-click the CD disk drive icon. A menu will appear. Click Properties. In the Digital CD Playback box of the next dialog box, click the check box "Enable digital CD audio for this CD-ROM device" to select it.



[Windows XP]

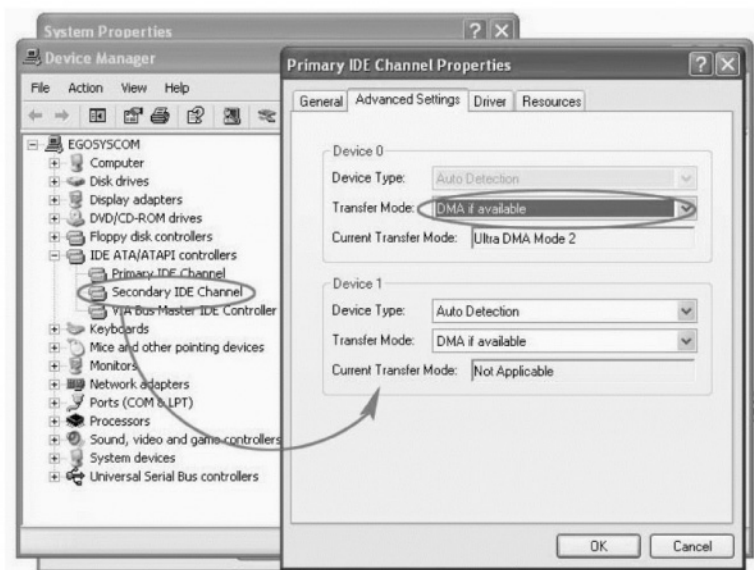
# MAYA 5.1 MK II

**Q : Unexpected sounds like flipping when playing audio CDs or DVDs.**

A : This usually occurs when the DMA mode is disabled. Please check below.

IDE controllers use two types of data transmission modes: PIO (Programmed Input/Output) and DMA (Direct Memory Access). In DMA mode, the system access the data stream from the hard disk or CD/DVD drives directly. This direct access to the data stream will reduce the CPU usage and enable fast data transition. In general, it is recommended to set the DMA mode for any CD/DVD drives for multimedia contents.

For Windows 2000/XP/2003 (Control Panel→System→Hardware→Device Manager)

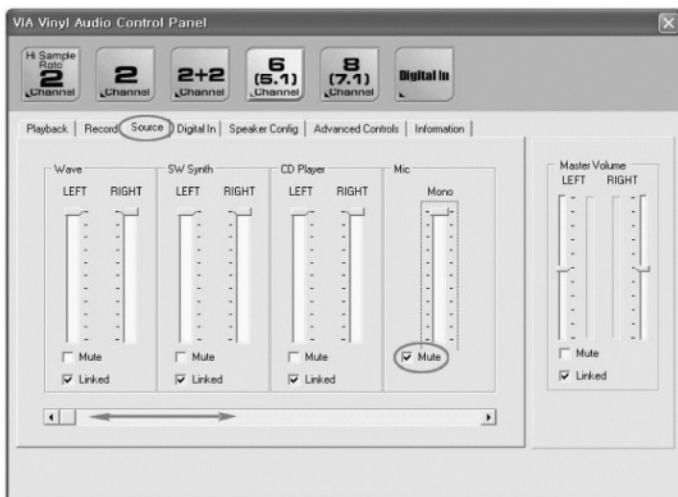


[Windows 2000/XP/2003]

**Q : I still hear a noise after I finished installing the driver flawlessly and made sure everything should work.**

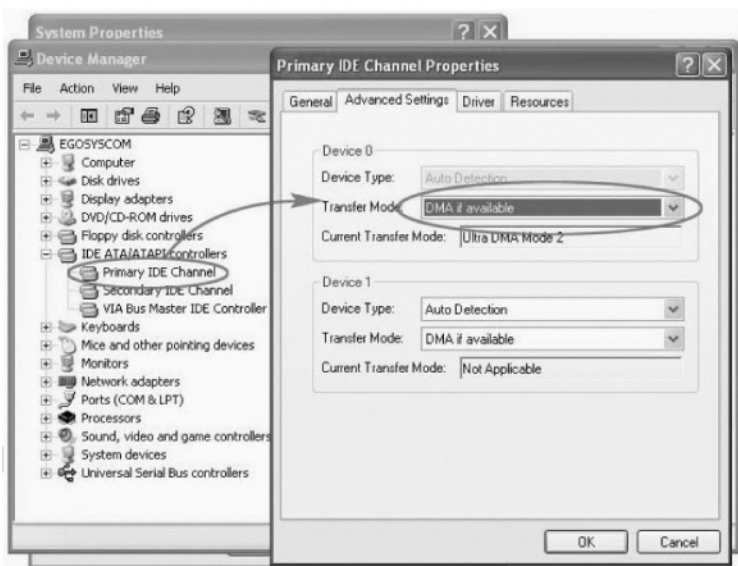
**A :** First, unplug your speaker cable from the soundcard, and connect other speakers or headphone to find out which device has the problem, either the speakers or the soundcard. If the output port of the soundcard has a problem, please follow these trouble shooting tips.

1. Turn down the volume level of the speaker and Windows Mixer. The volume level which is set too loud could cause a noise.
2. Mute unused input channels (For normal use). Leaving unused input sources muted except the Master Volume and Wave will reduce noises coming from unwanted input sources.



# MAYA 5.1 MK II

3. Check if any other PCI cards like VGA card or LAN card conflicts with MAYA 5.1 MKII. Note that IRQ conflict with other PCI devices like VGA card or onboard sound device is the most common problem.
  - ★ Refer to chapter 4-1 for disabling onboard Sound Device.
4. Update your system with the latest motherboard chipset patches and other device drivers. A crash may be caused by old versions of device drivers. To optimize all device functions and reduce the system crash, update your system with the latest device drivers, motherboard chipset patches, and BIOS update.
5. Check IDE controllers and cables (important). Errors and noise problem will continue when there are poor connections between media drives (CD/DVD-ROM) and motherboard. Multiple hard drives with different transmission speed in a single IDE channel may also cause flipping sound when playing large-sized movie files.



6. Check the capacity of power supply unit. Some noises may occur because of the lack of power supplied to the system. If you hear a noise when adding a new hard drive or CD-ROM/RW drive to your computer, make sure you have enough power supply capacity.
7. Ground your computer. Use the power cables with the third ground prong and makes sure your system is covered with the case that won't leak any electricity. Having your system's cover grounded will prevent the noise from the environment.
8. Change the electric outlet. Check if your system is connected to an extension cord that shares with too many devices.

**Q : I need more detailed explanation and questions about using the products.**

A : Please contact our technical support center. You can visit [http://www.audiotrak.net/support\\_contact.htm](http://www.audiotrak.net/support_contact.htm) and fill-up the on-line form. Be specific about your system configuration when you report your problem.